

0CNP3-M80100EN

Directions for the Parts Catalog.

- 1.The parts stipulated in this Parts Catalog are not necessarily standard equipped parts.
- 2.Parts may change without prior notice.
- 3.The following is an example of the Parts Catalog format.

REF.	LEV.	PARTSNo.	DESCRIPTION	QTY						I	R
				(A)	(B)	(C)	(D)	(E)	(F)		
1		729595-51390	FUEL INJECTION PUMP	1	1	1	1	1			
1-1	1	729595-51391	FUEL INJECTION PUMP	1	1	1	1	1			N
		(A=E00185) (B=E00200)									
3	2	26022-060162	SCREW M 6X16	9	9	9	9	9			
3-1	2	26022-060162	SCREW M 6X16	4	4	4	4	4			K
		(A=E00156) (B=E00156) (C=E00156) (D=E00156) (E=E00156)									
4	2	129470-51040	GAMSHIFT	9	9	9	9	9			
5	2	122710-51050	BEARING. ROLLER	9	9	9	9	9			
6	2	129470-51060	RETAINER	9	9	9	9	9			

Remarks	
(1)	BOOST COMPEMSATOR TYPE. OPTIONAL PART. TO E/#00155 (4JH-DT, 4JH-DTZ)

①Ref. No.

The Ref. No. listed may not be in accordance with the illustration Ref. No.

(Ex.) Illustration No. List Ref No.

1 1 (Before change) → 1-1 (After change)

For interchangeable symbols N, R and K, illustrations for new parts may be abbreviated.

②Lev. (Level)

Level indication

The numbers below indicate the level of relativity towards the main part.

- 1 ---- Main parts (Assembly parts)
- 2 ---- Sub component included in " 1 ".
- 3 ---- Sub component included in " 2 ".

Note) Parts that are not for sale are partially illustrated but not listed.

③Change Mark

The "I" indicates parts that were newly changed.

④Interchangeability Mark

When a part change takes place, one of the following interchangeability symbols is indicated beside the part.

Symbol	Interchangeability	Contents note
N	Old $\begin{matrix} \leftarrow \text{Yes} \\ \text{No} \rightarrow \end{matrix}$ New	New Part is interchangeable for Old Part but Old Part is not interchangeable for New Part.
Q	Old $\begin{matrix} \leftarrow \text{No} \\ \text{Yes} \rightarrow \end{matrix}$ New	New Part is not interchangeable for Old Part but Old Part is interchangeable for New Part.
R	Old $\begin{matrix} \leftarrow \text{Yes} \\ \text{Yes} \rightarrow \end{matrix}$ New	New/ Old Parts are both interchangeable.
S	Old $\begin{matrix} \leftarrow \text{No} \\ \text{No} \rightarrow \end{matrix}$ New	New/ Old Parts are both not interchangeable.
W		Part discontinued.
Z		Part newly added.
F		Not interchangeable by a single part but interchangeable together with related parts.
K		Changes only for used parts quantities.

⑤Effective Machine No.

When a part changes, the effective Machine No. will be indicated in the (A)-(F) column.

Product Symbol	Product No.	Product Symbol	Product No.
C	Clutch No. Compressor No.	F	Machine No. (Agricultural Equip.)
D	Drive No.	M	Machine No.
E	Engine No.	Note 1)	Date

Note 1) A date may follow the symbol. (Ex.) 1996.01

Note 2) " XXX " are for parts that could not be predicted or for engine models that could not be identified.

Note 3) (A=E/#00185) is the E/# (Engine Serial Number) for the column (A) model (in this case 4JH-DT) after the parts design change.

⑥Remarks Mark

Figures or alphabets (symbols) are entered in the remarks column.

The comments (remarks) on parts that are indicated at the bottom of the illustration are the same symbols as those stated above.

Contents

Fig. No.	Fig. Name	Fig. No.	Fig. Name
ENGINE SECTION		17.	BRAKE LEVER
1.	CYLINDER BLOCK	18.	MAIN CHANGE LEVER
2.	CYLINDER HEAD & BONNET	19.	SUB CHANGE LEVER
3.	TOOL & LABEL	20.	SIDE CLUTCH LEVER
4.	AIR CLEANER & MUFFLER	21.	DEADMAN LEVER
5.	CRANKSHAFT,PISTON & CAMSHAFT	PLATFORM CARRIER SECTION	
6.	FUEL TANK & FUEL LINE	22.	PLATFORM CARRIER
7.	CARBURETOR	TOOLS,ACCESSORIES & LABELS SECTION	
8.	GOVERNOR & CONTROL DEVICE	23.	LABELS
9.	FLYWHEEL MAG.& STARTING DEVICE	24.	TOOLS & ACCESSORIES
PULLEY & TENSION SECTION		TRAVELING SECTION (2)	
10.	TENSION ARM	25.	TRANSMISSION CASE
11.	PULLEY	26.	MAIN SHAFT
FRAME SECTION		27.	TRANSMISSION SHAFT B
12.	BODY FRAME	28.	SIDE CLUTCH SHAFT
TRAVELING SECTION (1)		29.	AXLE
13.	IDLER	30.	BRAKE
14.	TRACK ROLLER	31.	SIDE CLUTCH
CONTROL SECTION		32.	MAIN CHANGE
15.	HANDLE	PLATFORM CARRIER SEC	
16.	TRAVEL CLUTCH LEVER	33.	PLATFORM CARRIER(ADD.ITEM)

Contents

Fig. No. Fig. Name

Fig. No. Fig. Name

CONTROL SECTION

34. PTO LEVER(ADD.ITEM

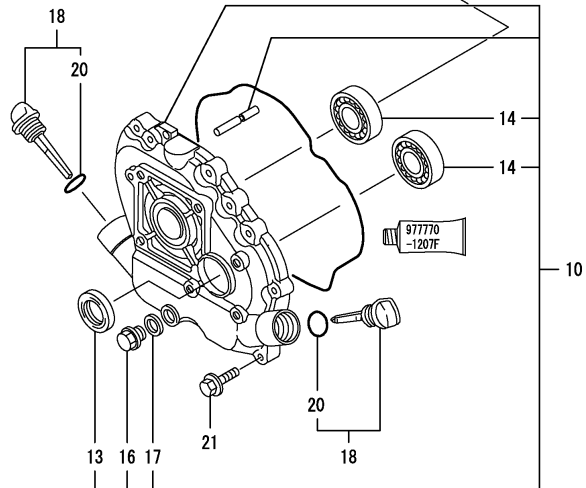
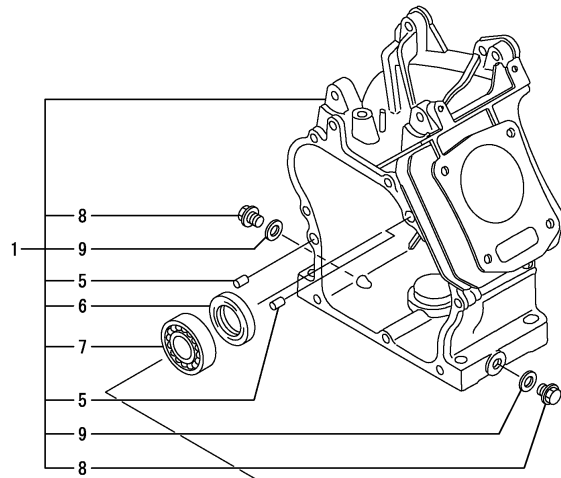
PULLEY & TENSION SEC

35. COUNTER SHAFT(ADD.ITEM

Fig.1. CYLINDER BLOCK

(A)=GA140E-SCK
(B)=
(C)=

(D)=
(E)=
(F)=



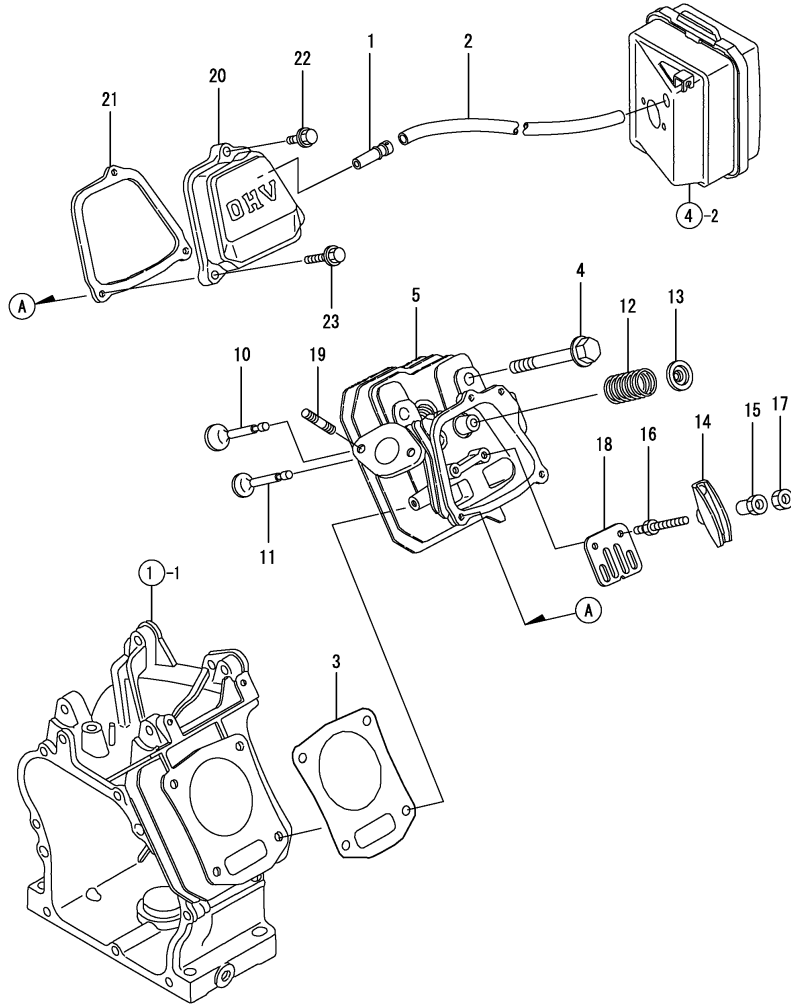
No.	Lev.	Parts No.	Description	Q'ty						I	R
				(A)	(B)	(C)	(D)	(E)	(F)		
1	1	760598-01561	BLOCK ASSY, CYLINDER	1							
5	2	114270-01600	PIN, M8X12	2							
6	2	160610-02220	SEAL, 20326	1							
7	2	24101-062040	BEARING, BALL 6204C3	1							
8	2	160610-01690	PLUG, M12	2							
9	2	104200-59170	GASKET, 12	2							
10	1	760590-01501	COVER ASSY	1							
13	2	160610-02220	SEAL, 20326	1							
14	2	24101-062040	BEARING, BALL 6204C3	2							
16	2	160610-01690	PLUG, M12	1							
17	2	104200-59170	GASKET, 12	1							
18	1	114299-01760	CAP ASSY	2							
20	2	114299-01950	O-RING, 18	2							
21	1	26476-060252	SCREW, TAPPING M6X25	8							

Remarks
(REMARKS)"EFFECTIVE MACHINE NO." OF
ENGINE IS INDICATED ON THE
ENGINE LABEL WHICH IS SHOWN
IN FIG.9.

Fig.2. CYLINDER HEAD & BONNET

(A)=GA140E-SCK
(B)=
(C)=

(D)=
(E)=
(F)=



No.	Lev.	Parts No.	Description	Q'ty						I	R
				(A)	(B)	(C)	(D)	(E)	(F)		
1	1	160690-03050	BREATHER	1							
2	1	160998-03190	HOSE, BREATHER L=105	1							
3	1	160598-01330	GASKET, HEAD	1							
3-1	1	160598-01331 (A=E94407)	GASKET, HEAD	1							N
4	1	160610-04201	BOLT, FLANGE M8X53	4							
5	1	160590-11010	HEAD ASSY, CYLINDER	1							R
5-1	1	160590-11011 (A=E81346)	HEAD ASSY, CYLINDER	1							
10	1	160590-11100	VALVE, INTAKE	1							
11	1	160590-11110	VALVE, EXHAUST	1							
12	1	160690-11120	SPRING, VALVE	2							
13	1	160690-11180	RETAINER, SPRING	2							
14	1	160690-11200	ARM, ROCKER	2							
15	1	160690-11221	PIVOT, ROCKER ARM	2							
15-1	1	160690-11222 (A=E95999)	PIVOT, ROCKER ARM	2							R
16	1	160690-11271	BOLT	2							
17	1	160690-11280	NUT, M6X0.5	2							
18	1	160690-11290	PLATE, GUIDE	1							
19	1	26216-080182	STUD, M8X 18	2							
20	1	160690-11300	BONNET	1							
21	1	160690-11310	GASKET, BONNET	1							
21-1	1	160690-11311 (A=E81346)	GASKET, BONNET	1							R
22	1	26106-060202	BOLT, M6X 20 PLATED	1							
23	1	26106-060352	BOLT, M6X 35 PLATED	2							

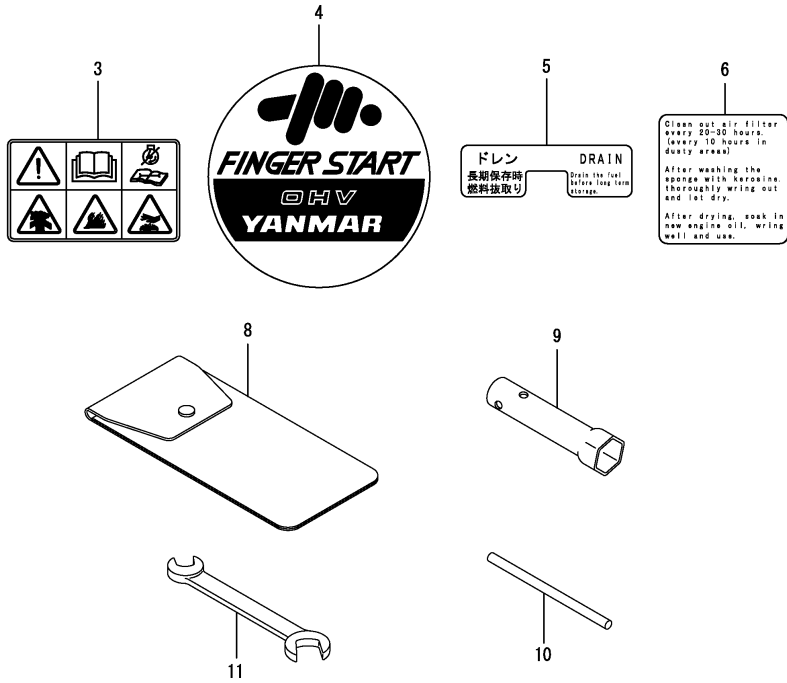
Remarks
(REMARKS)"EFFECTIVE MACHINE NO." OF
ENGINE IS INDICATED ON THE
ENGINE LABEL WHICH IS SHOWN
IN FIG.9.

Fig.3. TOOL & LABEL

(A)=GA140E-SCK
(B)=
(C)=

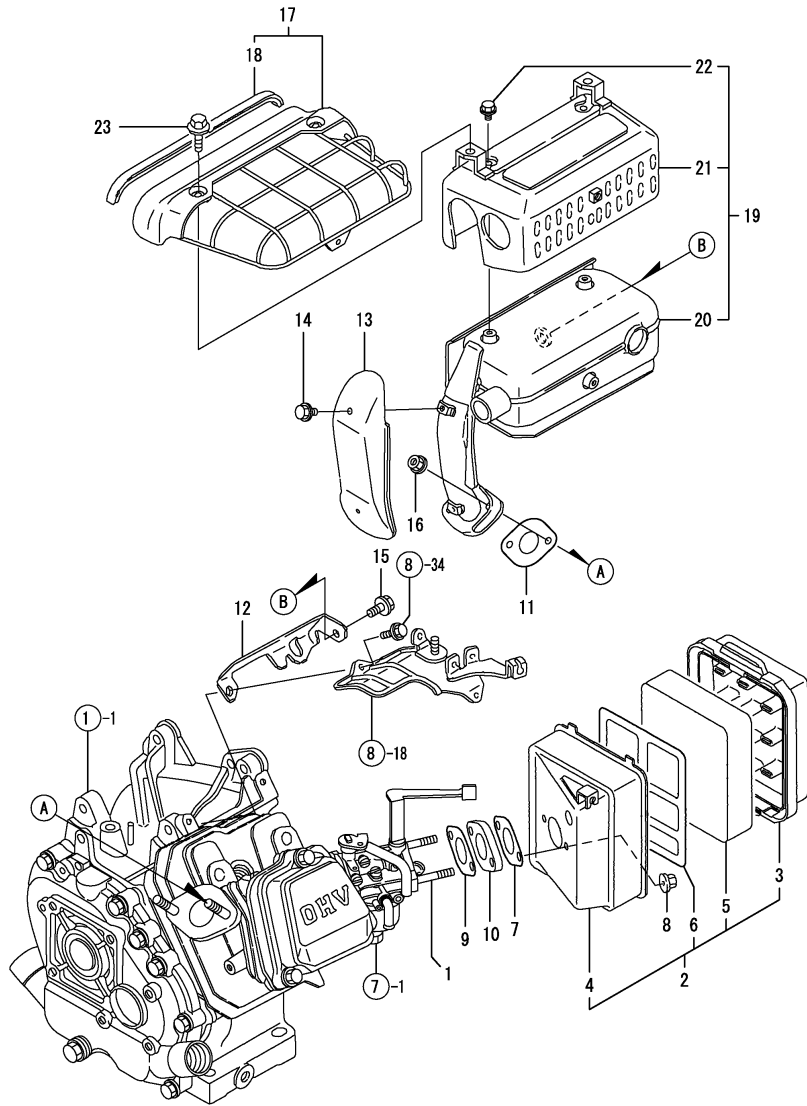
(D)=
(E)=
(F)=

No.	Lev.	Parts No.	Description	Q'ty						I	R
				(A)	(B)	(C)	(D)	(E)	(F)		
3	1	160991-07260	LABEL	1							
4	1	160798-07100	LABEL, FINGER START	1							
5	1	160690-07260	LABEL, DRAIN	1							
6	1	160664-07370	LABEL, AIR CLEANER	1							
8	1	160110-92610	BAG, TOOL	1							
9	1	160120-92700	WRENCH, 21 L86	1							
10	1	160110-92710	HANDLE, WRENCH	1							
11	1	28110-100120	SPANNER, 10X12	1							



Remarks
(REMARKS)"EFFECTIVE MACHINE NO." OF
ENGINE IS INDICATED ON THE
ENGINE LABEL WHICH IS SHOWN
IN FIG.9.

Fig.4. AIR CLEANER & MUFFLER



(A)=GA140E-SCK
(B)=
(C)=

(D)=
(E)=
(F)=

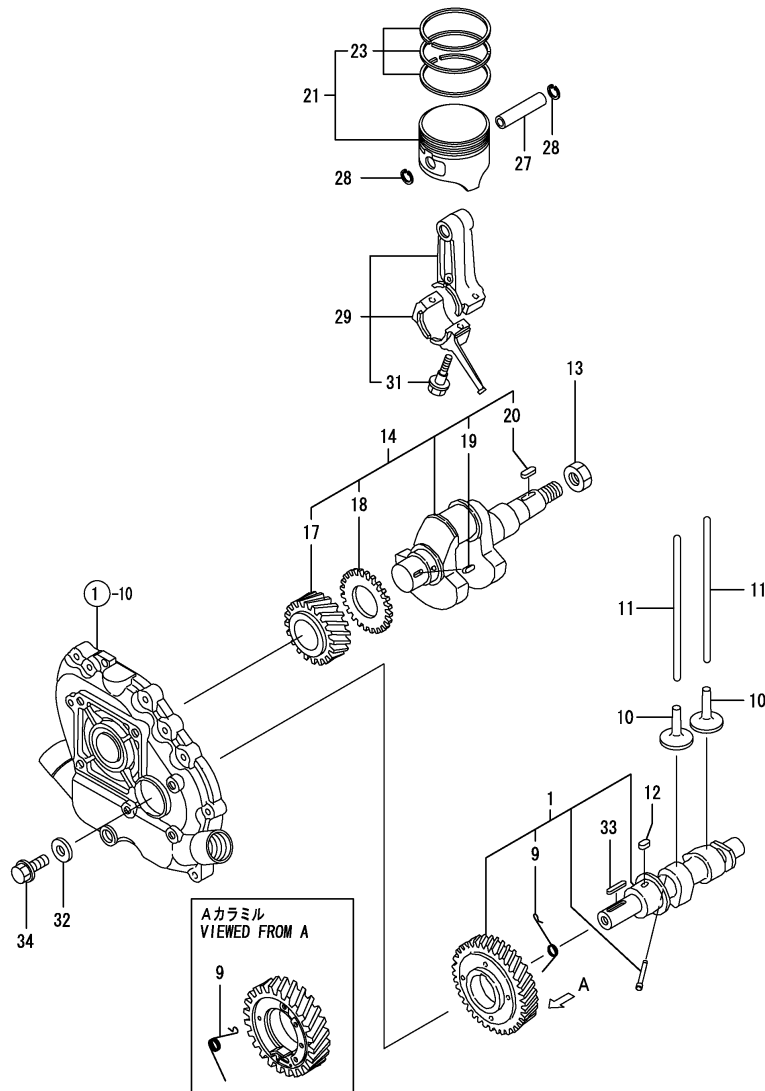
No.	Lev.	Parts No.	Description	Q'ty						I	R
				(A)	(B)	(C)	(D)	(E)	(F)		
1	1	160610-04630	BOLT, M6X82	2							
2	1	160690-12600	CLEANER ASSY, AIR	1							
3	2	160690-12510	CAP, AIR CLEANER	1							
4	2	160690-12530	BODY, AIR CLEANER	1							
5	2	160760-12530	ELEMENT	1							
6	2	160493-12550	HOLDER, ELEMENT	1							
7	1	160610-56151	GASKET, CARBURETOR	1							
8	1	26366-060002	NUT, M6	2							
9	1	160610-56151	GASKET, CARBURETOR	1							
10	1	160598-56160	SPACER, CARBURETOR	1							
11	1	160690-13200	GASKET, MUFFLER	1							
11-1	1	160690-13201	GASKET, MUFFLER	1							N
(A=E94407)											
12	1	160690-13550	BRACKET, MUFFLER	1							
13	1	160690-13900	COVER	1							
14	1	114252-13950	BOLT, M6X8	2							
15	1	26106-080142	BOLT, M8X 14 PLATED	1							
16	1	26366-080002	NUT, M8	2							
17	1	160690-13700	COVER	1							
18	2	160690-13911	RUBBER, SEAL	1							
18-1	2	160690-13912	RUBBER, SEAL	1							N
(A=E94407)											
19	1	160698-13620	MUFFLER ASSY	1							
20	2	160690-13500	MUFFLER	1							
21	2	160698-13560	COVER	1							
22	2	26106-060082	BOLT, M6X 8 PLATED	3							
23	1	114252-13950	BOLT, M6X8	3							

Remarks
(REMARKS)"EFFECTIVE MACHINE NO." OF
ENGINE IS INDICATED ON THE
ENGINE LABEL WHICH IS SHOWN
IN FIG.9.

Fig.5. CRANKSHAFT,PISTON & CAMSHAFT

(A)=GA140E-SCK
(B)=
(C)=

(D)=
(E)=
(F)=



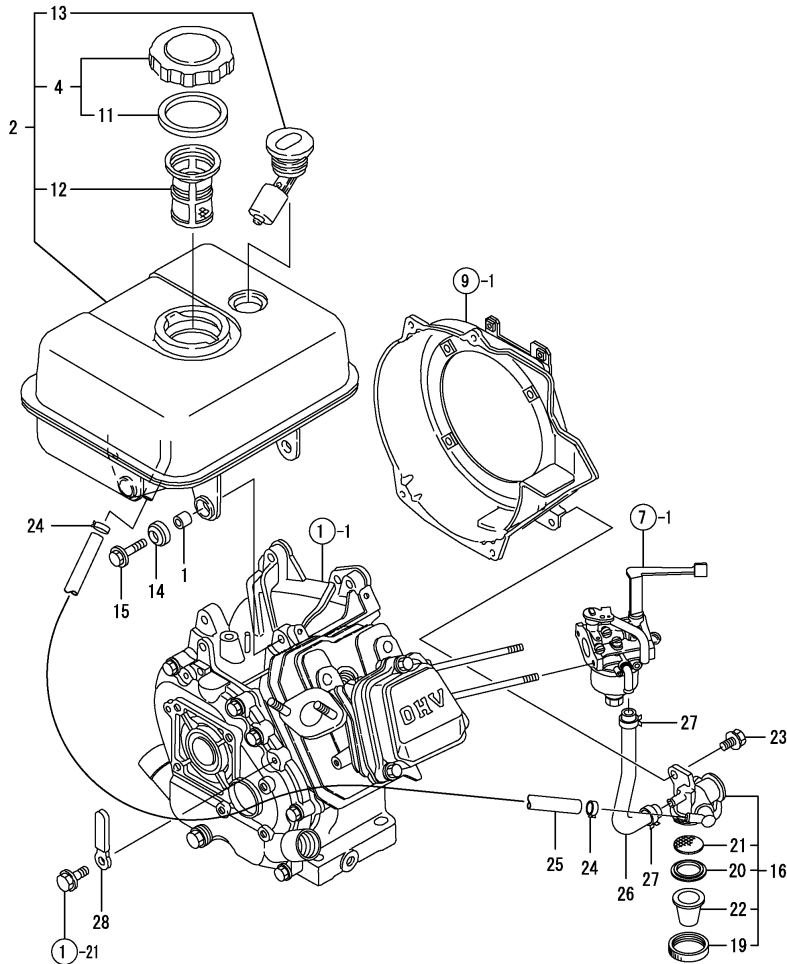
No.	Lev.	Parts No.	Description	Q'ty						I	R
				(A)	(B)	(C)	(D)	(E)	(F)		
1	1	160590-14051	CAMSHAFT ASSY	1							
9	2	160590-14571	SPRING,DECOMPRESSION	1							
10	1	160490-14200	TAPPET	2							
11	1	160590-14400	ROD, PUSH	2							
12	1	22512-040120	KEY, 4X 12	1							
13	1	160610-04910	NUT, FLYWHEEL M14	1							
14	1	760590-21700	CRANKSHAFT ASSY	1							
17	2	160590-21200	GEAR, CRANKSHAFT	1							
18	2	160590-21210	GEAR, IDLE	1							
19	2	160610-21290	KEY, 4X10	1							
20	2	22512-040160	KEY, 4X 16	1							
21	1	160598-22010	PISTON ASSY	1							
23	2	760598-22500	RING SET, PISTON	1							
27	1	160590-22300	PIN, PISTON	1							
28	1	22252-000130	RING, 13	2							
29	1	760590-23700	ROD ASSY, CONNECTING	1							
31	2	26106-060302	BOLT, M6X 30 PLATED	2							
32	1	160310-14550	WASHER	1							
33	1	22512-050300	KEY, 5X 30	1							
34	1	26106-080202	BOLT, M8X 20 PLATED	1							

Remarks
(REMARKS)"EFFECTIVE MACHINE NO." OF
ENGINE IS INDICATED ON THE
ENGINE LABEL WHICH IS SHOWN
IN FIG.9.

Fig.6. FUEL TANK & FUEL LINE

(A)=GA140E-SCK
(B)=
(C)=

(D)=
(E)=
(F)=



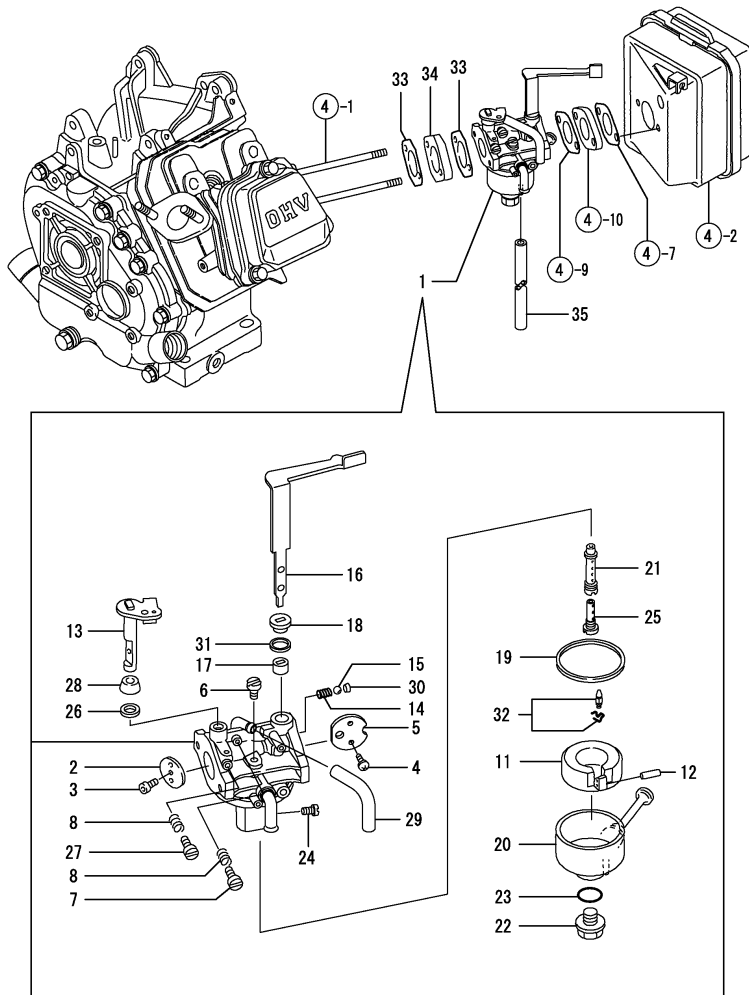
No.	Lev.	Parts No.	Description	Q'ty						I	R
				(A)	(B)	(C)	(D)	(E)	(F)		
1	1	114250-45310	COLLAR	4							
2	1	760590-55710	TANK ASSY, FUEL	1							
4	2	160710-55061	CAP ASSY	1							
11	3	160393-55050	GASKET	1							
12	2	160610-55100	FILTER, FUEL	1							
13	2	160762-55150	GAUGE, FUEL	1							
14	1	160690-55461	DAMPER, FUEL TANK	4							
14-1	1	160690-55462	DAMPER, FUEL TANK	4							N
(A=E84028)											
15	1	160690-55140	BOLT	4							
16	1	160692-55300	COCK ASSY, FUEL	1							
19	2	160710-55360	RING	1							
20	2	160710-55370	GASKET	1							
21	2	160710-55382	FILTER	1							
22	2	160710-55390	CUP, FUEL COCK L37	1							
23	1	26106-060102	BOLT, M6X 10 PLATED	1							
24	1	106990-44660	CLIP, HOSE 12.5	2							
25	1	160802-59371	HOSE, FUEL A-400	1							
26	1	160820-59391	HOSE, D11.5/L159	1							
27	1	124060-77680	CLIP, HOSE 10	2							
27-1	1	119520-03990	CLIP, HOSE 10.5	2							R
(A=E84028)											
28	1	160710-78710	CLAMP, CORD	1							

Remarks
(REMARKS)"EFFECTIVE MACHINE NO." OF
ENGINE IS INDICATED ON THE
ENGINE LABEL WHICH IS SHOWN
IN FIG.9.

Fig.7. CARBURETOR

(A)=GA140E-SCK
(B)=
(C)=

(D)=
(E)=
(F)=



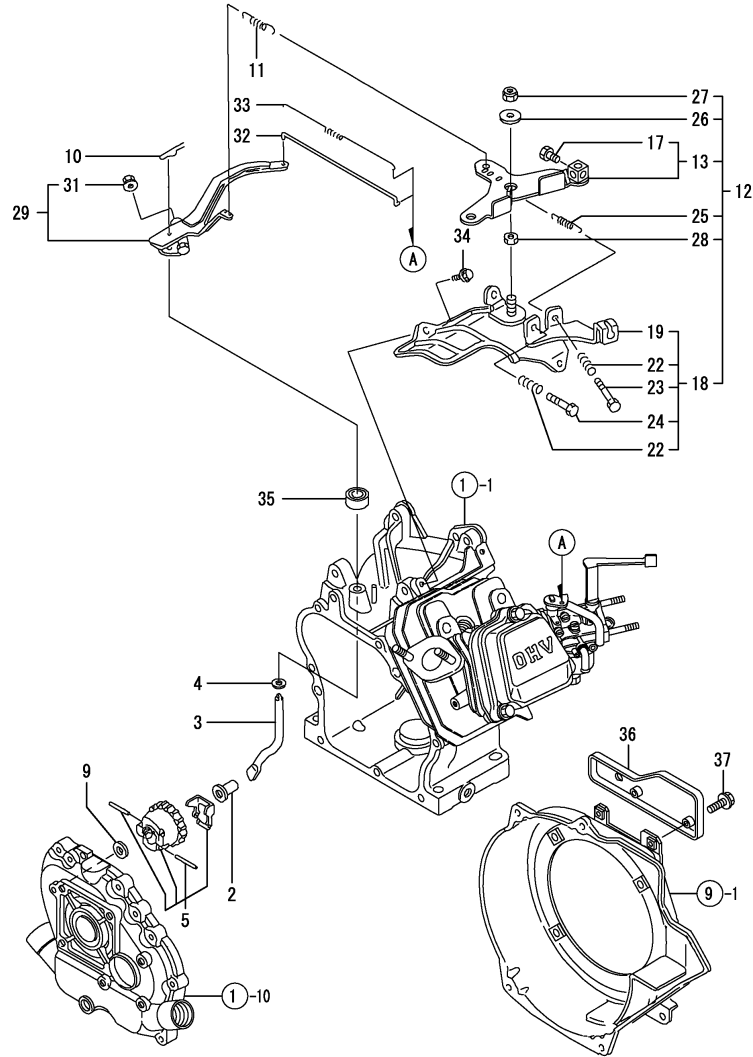
No.	Lev.	Parts No.	Description	Q'ty						I	R
				(A)	(B)	(C)	(D)	(E)	(F)		
1	1	160598-56090	CARBURETOR ASSY	1							
1-1	1	160598-56091	CARBURETOR ASSY	1							R
(A=EXXX)											
2	2	160592-56540	VALVE, THROTTLE	1							
3	2	160690-56560	SCREW	1							
4	2	160690-56570	SCREW	2							
5	2	160590-56530	VALVE, CHOKE	1							
6	2	160330-56740	JET, PILOT	1							
7	2	160692-56710	SCREW	1							
8	2	181230-56380	SPRING	2							
11	2	160769-56620	FLOAT ASSY	1							
12	2	160610-56630	PIN, FLOAT	1							
13	2	160598-56640	SHAFT, THROTTLE	1							
14	2	160310-56980	SPRING, CHOKE	1							
15	2	160310-56990	BALL, STEEL	1							
16	2	160697-56650	LEVER, CHOKE	1							
17	2	160810-56580	RING, CHOKE SHAFT	1							
18	2	160810-56590	RING, CHOKE LEVER	1							
19	2	160610-56610	GASKET	1							
20	2	160598-56660	BODY, FLOAT CHAMBER	1							
21	2	160598-56570	NOZZLE, MAIN	1							
22	2	160893-56650	BOLT	1							
23	2	160893-56660	O-RING	1							
24	2	160598-56590	JET, MAIN	1							
25	2	160690-56751	NOZZLE, MAIN	1							
26	2	160640-56850	SEAL	1							
27	2	160667-56750	ADJUSTER	1							
28	2	160702-56720	RING	1							
29	2	160692-56770	HOSE	1							Z
(A=EXXX)											
30	2	160692-56700	PLUG	1							
31	2	160692-56800	RUBBER, SEAL	1							
32	1	160692-56560	VALVE ASSY, NEEDLE	1							1
33	1	160610-56151	GASKET, CARBURETOR	2							
34	1	160690-56160	SPACER, CARBURETOR	1							
35	1	23061-030180	PIPE, 3X 180	1							

Remarks
(1) REPAIR PART.
(REMARKS)"EFFECTIVE MACHINE NO." OF
ENGINE IS INDICATED ON THE
ENGINE LABEL WHICH IS SHOWN
IN FIG.9.

Fig.8. GOVERNOR & CONTROL DEVICE

(A)=GA140E-SCK
(B)=
(C)=

(D)=
(E)=
(F)=



No.	Lev.	Parts No.	Description	Q'ty						I	R
				(A)	(B)	(C)	(D)	(E)	(F)		
2	1	160690-61301	SPINDLE	1							
3	1	160690-61311	SHAFT	1							
4	1	160690-61450	WASHER	1							
5	1	160690-61600	GEAR ASSY, GOVERNOR	1							
9	1	160120-76940	WASHER	1							
10	1	22372-080000	PIN, SNAP 8	1							
11	1	160594-66011	SPRING, GOVERNOR	1							
12	1	160692-66101	CONTROLLER ASSY	1							
13	2	160692-66051	LEVER ASSY, CONTROL	1							
17	3	26117-040088	BOLT M 4X 8 PLATED	1							
18	2	160690-66111	BASE ASSY	1							
19	3	160690-66143	BASE ASSY	1							
22	3	160520-66291	SPRING	2							
23	3	26117-040257	BOLT, M4X 25 PLATED	1							
24	3	26117-040357	BOLT, M4X 35 PLATED	1							
25	2	160664-66220	SPRING, RETURN	1							
26	2	160670-66350	COLLAR	1							
27	2	26347-060002	NUT, M6	1							
28	2	26757-060002	NUT, LOCK M6	1							
28-1	2	26756-060002	NUT, LOCK M6	1							R
(A=EXXX)											
29	1	160690-66180	LEVER ASSY, GOVERNOR	1							
31	2	26366-060002	NUT, M6	1							
32	1	160690-66200	LINK, THROTTLE	1							
33	1	160690-66210	SPRING, TENSION	1							
34	1	26476-060142	SCREW, TAPPING M6X14	3							
35	1	114770-61600	SEAL, OIL	1							
36	1	160690-66310	PANEL	1							
37	1	26106-060162	BOLT, M6X 16 PLATED	2							

Remarks
(REMARKS)"EFFECTIVE MACHINE NO." OF
ENGINE IS INDICATED ON THE
ENGINE LABEL WHICH IS SHOWN
IN FIG.9.

Fig.9. FLYWHEEL MAG.& STARTING DEVICE

(A)=GA140E-SCK

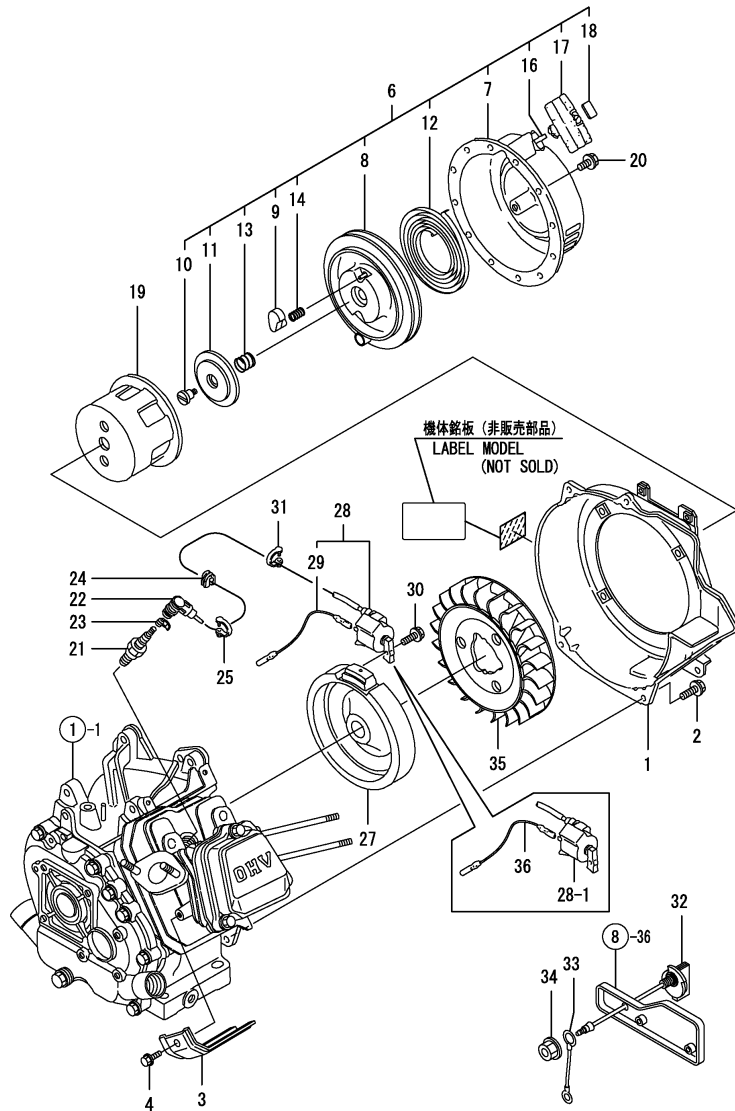
(B)=

(C)=

(D)=

(E)=

(F)=



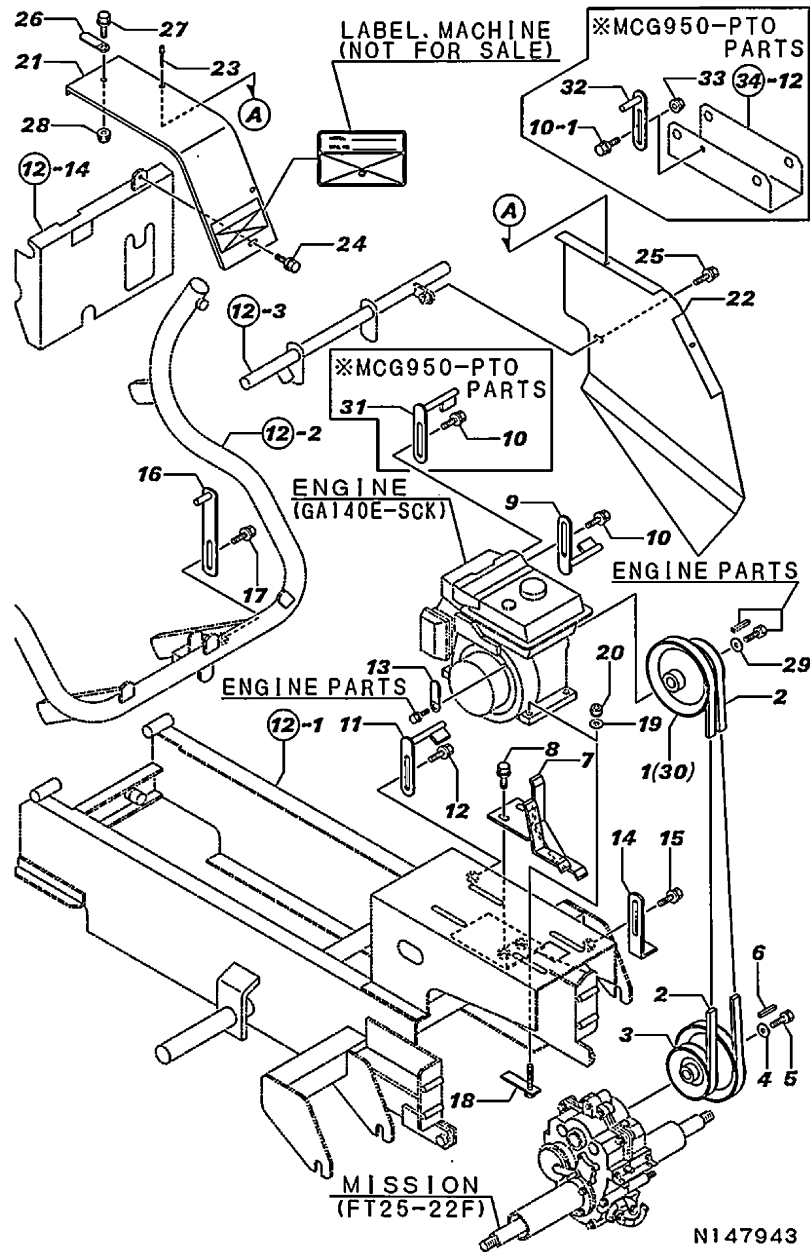
No.	Lev.	Parts No.	Description	Q'ty						I	R
				(A)	(B)	(C)	(D)	(E)	(F)		
1	1	160590-45130	CASE, COOLING FAN	1							
2	1	26476-060142	SCREW, TAPPING M6X14	4							
3	1	160699-45200	COVER	1							
4	1	26476-060142	SCREW, TAPPING M6X14	1							
6	1	160690-76251	STARTER ASSY, RECOIL	1							
7	2	160690-76511	CASE ASSY, STARTER	1							
8	2	160690-76521	REEL	1							
9	2	160690-76801	RATCHET	2							
10	2	160698-76580	SCREW	1							
11	2	160690-76531	GUIDE, RATCHET	1							
12	2	160690-76540	SPRING, SPIRAL	1							
13	2	160690-76561	SPRING, FRICTION	1							
14	2	160690-76570	SPRING, RETURN	2							
16	2	160690-76630	ROPE, STARTER	1							
17	2	160690-76620	KNOB, STARTER	1							
18	2	160690-76830	CAP, KNOB	1							
19	1	160690-76591	PULLEY, STARTER	1							
20	1	26106-060082	BOLT, M6X 8 PLATED	4							
21	1	160793-78010	PLUG, SPARK	1							
22	1	160700-78040	CAP, PLUG	1							
23	1	160700-78050	TERMINAL, PLUG	1							
24	1	160700-78720	GROMMET	1							
25	1	29610-000950	CLAMP, SPEED 095	1							Z
		(A=E82665)									
27	1	160590-78542	ROTOR	1							
28	1	160590-78532	COIL, IGNITION	1							
28-1	1	160590-78533	COIL, IGNITION	1							Q
		(A=E82665)									
29	2	160690-78230	WIRE	1							Z
		(A=E82665)									
30	1	26476-060302	SCREW, TAPPING M6X30	2							
30-1	1	160690-04350	BOLT, M6X30	2							R
		(A=E95999)									
31	1	29610-000650	CLAMP, SPEED 065	1							
32	1	160611-77250	SWITCH, STOP	1							
33	1	160495-77260	WIRE	1							
34	1	26366-080002	NUT, M8	1							
35	1	160699-45010	CASE, COOLING FAN	1							
36	1	160690-78230	WIRE	1							W
		(A=E82665)									

Remarks
 (REMARKS)"EFFECTIVE MACHINE NO." OF
 ENGINE IS INDICATED ON THE
 ENGINE LABEL WHICH IS SHOWN
 IN FIG.9.

Fig.11. PULLEY

(A)=MCG950
 (B)=MCG950-2
 (C)=MCG950-PTO

(D)=
 (E)=
 (F)=

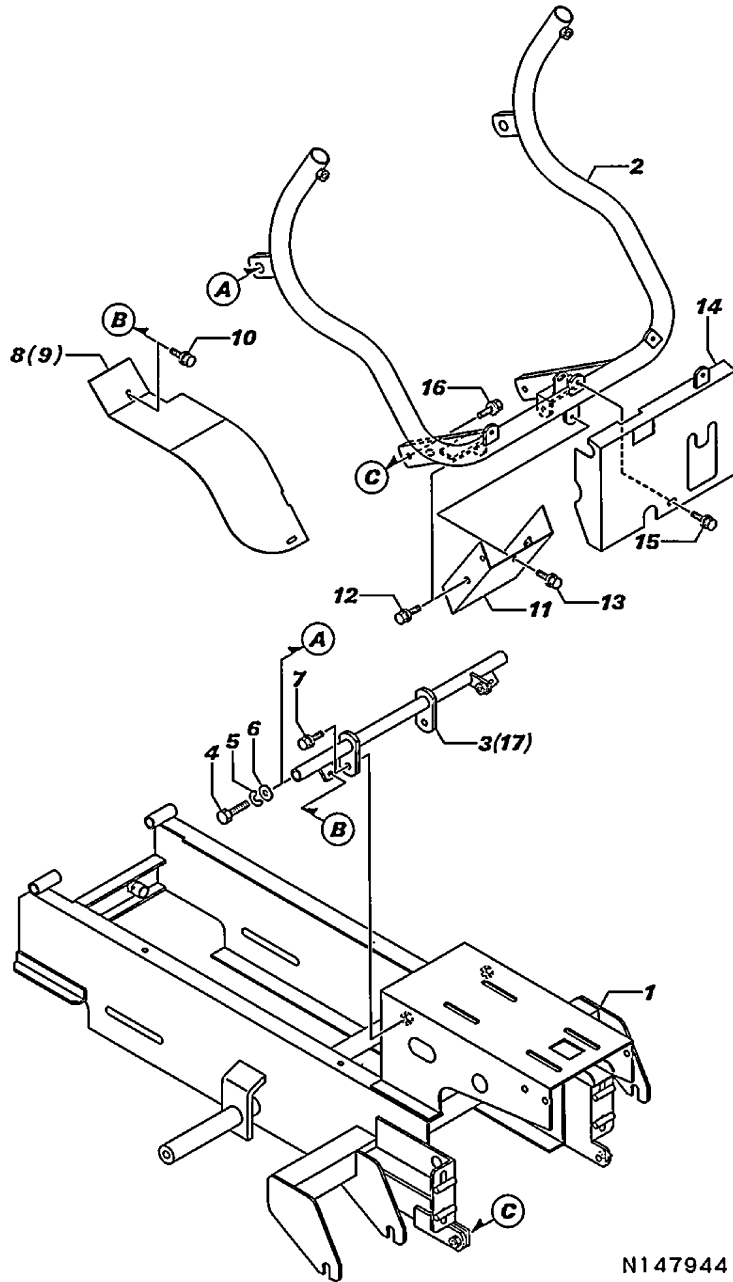


No.	Lev.	Parts No.	Description	Qty						I	R
				(A)	(B)	(C)	(D)	(E)	(F)		
1	1	1N3504-21000	PULLEY,ENGINE	1	1						
2	1	25123-003001	V-BELT, B30H	2	2	2					
3	1	1N3504-21010	PULLEY,TRANSMISSION	1	1	1					
4	1	1N3502-22170	WASHER	1	1	1					
5	1	26016-060164	BOLT 6X16 W/L.W.	1	1	1					
6	1	22550-050251	KEY, 5X 25	1	1	1					
7	1	1N3504-22030	GUIDE,BELT C	1	1	1					
8	1	26018-100254	BOLT M10X 25	2	2	2					
9	1	1N3504-22070	GUIDE,BELT D	1	1	1					
10	1	26018-080164	BOLT M 8X 16	1	1	2					
10-1	1	26018-080164	BOLT M 8X 16 (C=F013296)			3					K
11	1	1N3504-22080	GUIDE,BELT E	1	1	1					
11-1	1	1N1550-22040	GUIDE 60X100,BELT (C=F013296)			1					N
12	1	26018-080164	BOLT M 8X 16	1	1	1					
13	1	1E6020-83890	CLIP	2	2	2					
14	1	1N3504-22000	GUIDE A,BELT	1	1	1					
15	1	26018-080164	BOLT M 8X 16	1	1	1					
16	1	1N3504-22010	GUIDE 12X150,BELT	1	1	1					
17	1	26018-080164	BOLT M 8X 16	1	1	1					
18	1	1N3503-16000	BOLT M8X45	4	4	4					
19	1	22137-080000	WASHER, 8	4	4	4					
20	1	26051-080002	NUT, M8	4	4	4					
21	1	1N3504-58030	PURRY COVER	1	1						
22	1	1N3504-58020	PURRY COVER	1	1						
23	1	1N3503-58120	RIVET	2	2						
24	1	1N3513-69050	BOLT 6X12	1	1						
25	1	1N1291-58080	BOLT 6X16 W/P&SW.	1	1						
26	1	1E6020-83890	CLIP	1	1						
27	1	1N1291-58080	BOLT 6X16 W/P&SW.	1	1						
28	1	26367-060002	NUT, M6	1	1						
29	1	1N3502-21020	WASHER 22X8.5	1	1	1					
30	1	1N3504-21020	PULLEY,ENGINE			1					
31	1	1N3504-67280	GUIDE,BELT PULLEY			1					
32	1	1N1291-22020	GUARD 40,BELT (C=F013296)			1					W
33	1	26367-080002	NUT, M8 (C=F013296)			1					W

Fig.12. BODY FRAME

(A)=MCG950
 (B)=MCG950-2
 (C)=MCG950-PTO

(D)=
 (E)=
 (F)=



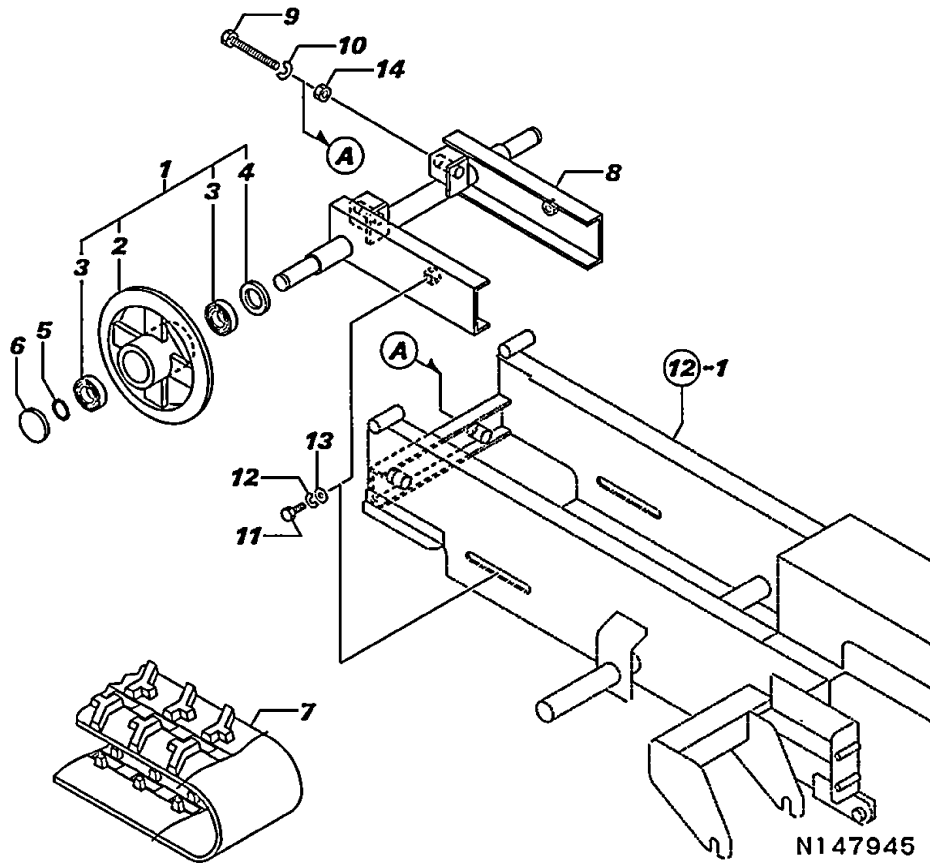
N147944

No.	Lev.	Parts No.	Description	Qty						I	R
				(A)	(B)	(C)	(D)	(E)	(F)		
1	1	1N3504-31000	FRAME,BODY	1	1	1					
2	1	1N3504-54000	STEP	1	1	1					
3	1	1N3504-54071	SHAFT,STEP	1	1						
4	1	26117-140454	BOLT, M14X 45 PLATED	2	2	2					
5	1	22217-140000	WASHER, SPRING 14	2	2	2					
6	1	22137-140000	WASHER, 14	2	2	2					
7	1	26018-100254	BOLT M10X 25	2	2	2					
8	1	1N3504-58061	FENDER (L)	1	1	1					
9	1	1N3504-58070	FENDER R	1	1						
10	1	1N3513-69050	BOLT 6X12	4	4	2					
11	1	1N3504-58000	PROTECTOR	1	1	1					
12	1	1N1291-58080	BOLT 6X16 W/P&SW.	2	2	2					
13	1	1N3513-69050	BOLT 6X12	1	1	1					
14	1	1N3504-58040	FENDER	1	1	1					
15	1	1N3513-69050	BOLT 6X12	1	1	1					
16	1	26018-100254	BOLT M10X 25	2	2	2					
17	1	1N3504-67110	SHAFT,STEP			1					

Fig.13. IDLER

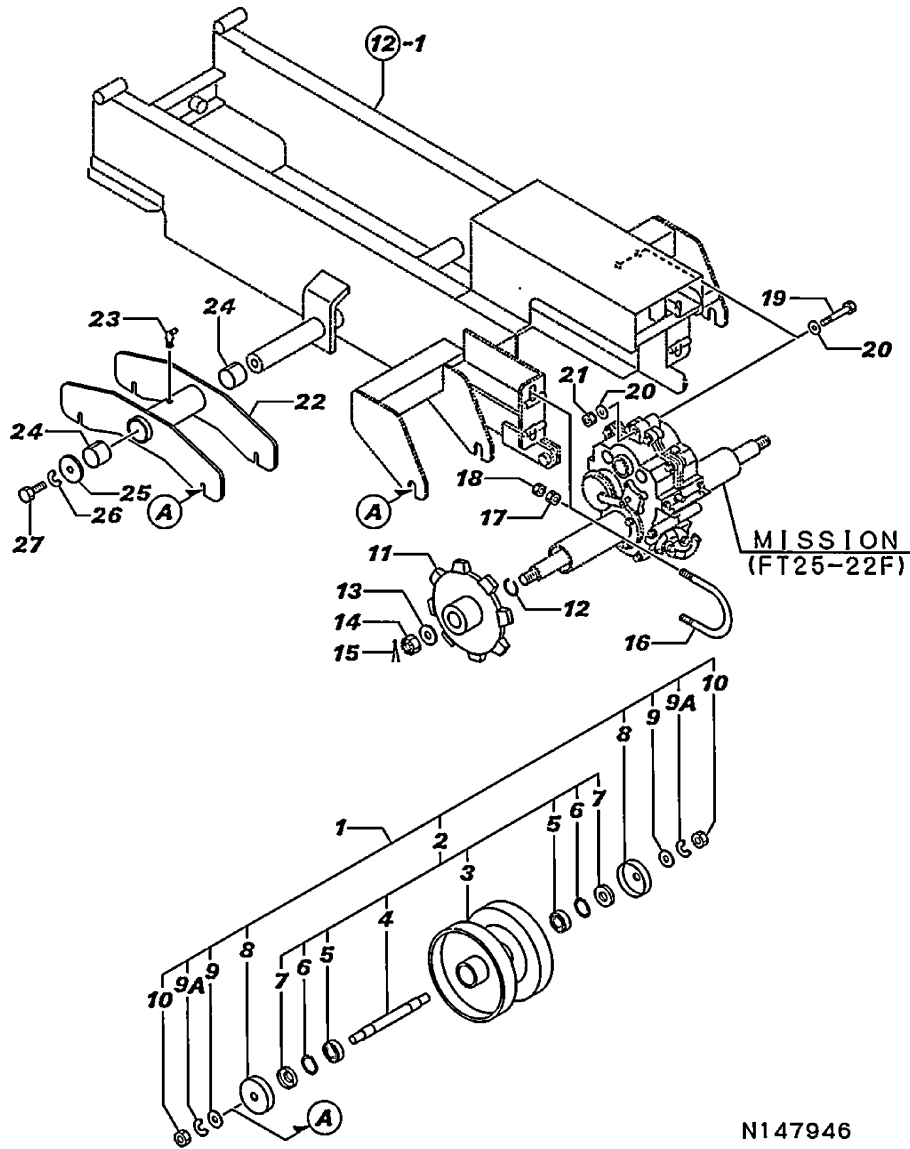
(A)=MCG950
(B)=MCG950-2
(C)=MCG950-PTO

(D)=
(E)=
(F)=



No.	Lev.	Parts No.	Description	Qty						I	R
				(A)	(B)	(C)	(D)	(E)	(F)		
1	1	7N3503-35000	FLOAT RING ASSY.	2	2	2					
2	2	1N3503-35070	WHEEL, IDLE	2	2	2					
3	2	24101-060054	BEARING, BALL 6005	4	4	4					
4	2	24421-304707	SEAL, OIL TC304707	2	2	2					
5	1	22242-000250	RING, 25	2	2	2					
6	1	1N3506-35020	SEAL CAP	2	2	2					
7	1	1N3503-37000	CRAWLAR 180X60X37	2	2	2					
8	1	1N3504-35000	BRACKET, FLOAT RING	1	1	1					
9	1	26117-141504	BOLT, M14X150 PLATED	2	2	2					
10	1	22217-140000	WASHER, SPRING 14	2	2	2					
11	1	26117-120254	BOLT M12X 25 PLATED	2	2	2					
12	1	22217-120000	WASHER, SPRING 12	2	2	2					
13	1	22137-120000	WASHER, 12	2	2	2					
14	1	26757-140002	NUT, LOCK M14	2	2	2					

Fig.14. TRACK ROLLER



N147946

(A)=MCG950
(B)=MCG950-2
(C)=MCG950-PTO

(D)=
(E)=
(F)=

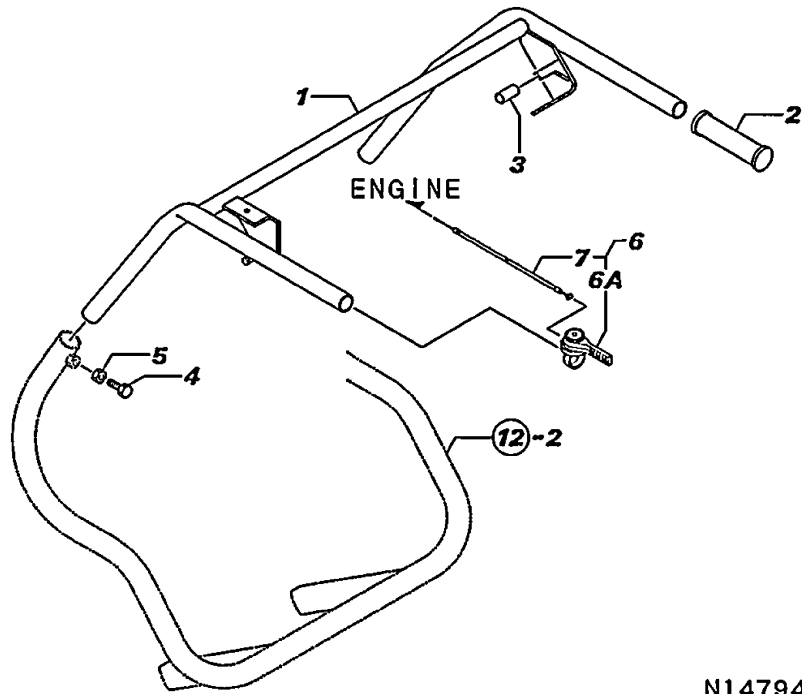
No.	Lev.	Parts No.	Description	Qty						I	R
				(A)	(B)	(C)	(D)	(E)	(F)		
1	1	7N3501-36010	LWR.TRANK ROLLER SET	6	6						
1-1	1	7N3563-36010	LWR.TRANK ROLLER SET	6	6	6					S
		(A=F012817) (B=F012817)									
2	2	7N3501-36000	LWR.TRANK ROLLER ASY	6	6						
2-1	2	7N3563-36000	LWR.TRANK ROLLER ASY	6	6	6					S
		(A=F012817) (B=F012817)									
3	3	1N3501-36010	ROLLER,LOWER TRACK	6	6						
3-1	3	1N3520-36230	ROLLER,LOWER TRACK	6	6	6					S
		(A=F012817) (B=F012817)									
4	3	1N3501-35020	SHAFT	6	6						
4-1	3	1N3563-36010	SHAFT	6	6	6					S
		(A=F012817) (B=F012817)									
5	3	24101-060024	BEARING, BALL 6002	12	12						
5-1	3	24101-060044	BEARING, BALL 6004	12	12	12					S
		(A=F012817) (B=F012817)									
6	3	22242-000150	RING, 15	12	12						
6-1	3	22242-000200	RING, 20	12	12	12					S
		(A=F012817) (B=F012817)									
7	3	24421-153206	SEAL, OIL TC153206	12	12						
7-1	3	1N1101-36041	SEAL 204212,OIL	12	12	12					S
		(A=F012817) (B=F012817)									
8	2	1N1091-36000	COVER,OIL SEAL	12	12						
8-1	2	1N3520-35020	COVER,OIL SEAL	12	12	12					S
		(A=F012817) (B=F012817)									
9	2	22137-120000	WASHER, 12	12	12	12					
9A	2	22217-120000	WASHER, SPRING 12	12	12	12					
10	2	26717-120002	NUT, M12	12	12	12					
11	1	1N3503-35060	SPROCKET	2	2	2					
12	1	1N3504-53000	CIRCLIP	2	2	2					
13	1	22137-160000	WASHER, 16	2	2	2					
14	1	26817-160002	NUT, CASTLE M16	2	2	2					
15	1	22417-400400	PIN, COTTER 4.0X40	2	2	2					
16	1	1N3501-35030	U-BOLT	2	2	2					
17	1	26052-100002	NUT, M10	4	4	4					
18	1	26757-100002	NUT, LOCK M10	4	4	4					
19	1	26117-100702	BOLT M10X 70 PLATED	1	1	1					
20	1	22137-100000	WASHER, 10	2	2	2					
21	1	26757-100002	NUT, LOCK M10	1	1	1					
22	1	1N3503-36000	ICORADER	2	2	2					
23	1	1N3505-33040	NIPPLE BMT6X1,GREASE	2	2	2					
24	1	1E1107-62040	LINER	4	4	4					
25	1	1E1102-71190	WASHER	2	2	2					
26	1	22217-120000	WASHER, SPRING 12	2	2	2					
27	1	26117-120254	BOLT M12X 25 PLATED	2	2	2					

Fig.15. HANDLE

(A)=MCG950
(B)=MCG950-2
(C)=MCG950-PTO

(D)=
(E)=
(F)=

No.	Lev.	Parts No.	Description	Q'ty						I	R
				(A)	(B)	(C)	(D)	(E)	(F)		
1	1	1N3503-47000	HANDLE	1							
1-1	1	1N3503-47001	HANDLE	1	1	1					S
(A=F011488)											
2	1	1N1313-44000	GRIP A 25.4	2	2	2					
3	1	1N3504-41110	HOSE	1	1	1					
4	1	26117-100254	BOLT, M10X 25 PLATED	2	2	2					
5	1	26757-100002	NUT, LOCK M10	2	2	2					
6	1	7N3561-51000	LEVER,ACCELE	1	1	1					
6A	2	1N3503-51010	LEVER 25,AXLE	1	1	1					
7	2	1N3561-51070	WIRE,ACCELE	1	1	1					

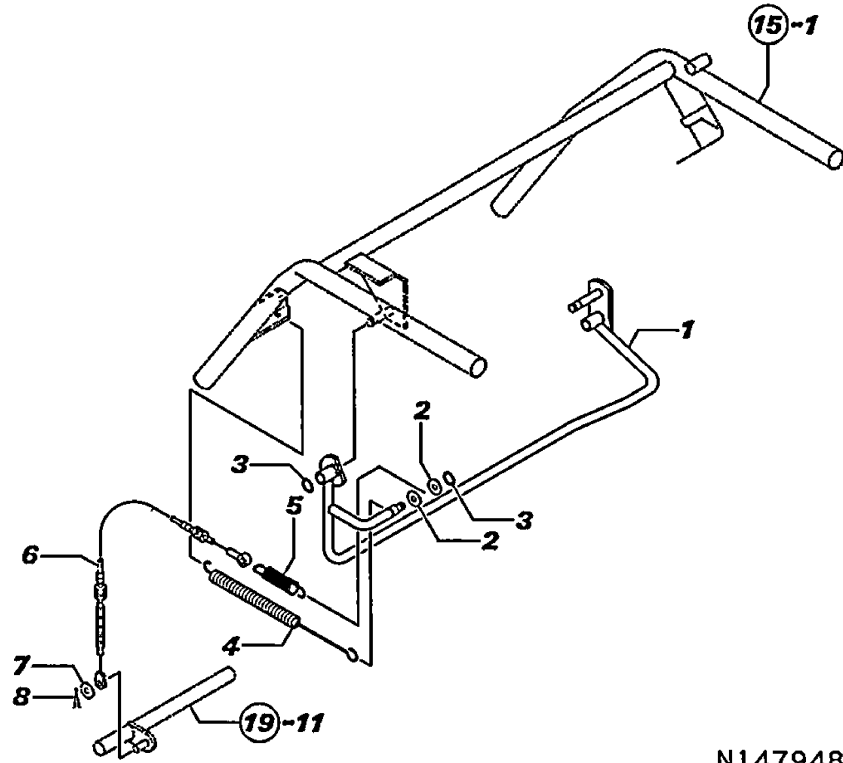


N147947

Fig.16. TRAVEL CLUTCH LEVER

(A)=MCG950
 (B)=MCG950-2
 (C)=MCG950-PTO

(D)=
 (E)=
 (F)=



N147948

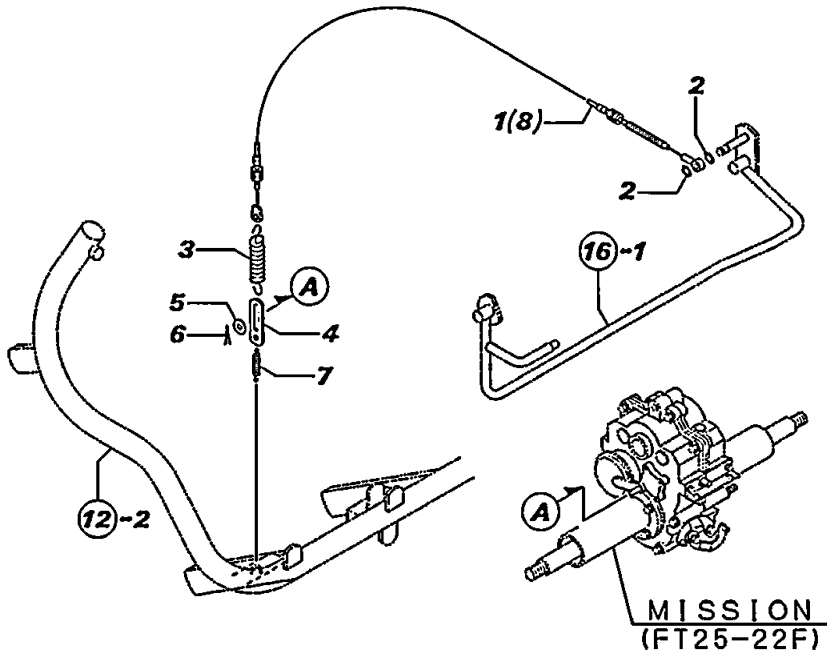
No.	Lev.	Parts No.	Description	Q'ty						I	R
				(A)	(B)	(C)	(D)	(E)	(F)		
1	1	1N3503-42000	LEVER, OPERATION	1							
1-1	1	1N3503-42001	LEVER, OPERATION	1	1	1					S
(A=F011488)											
2	1	22137-100000	WASHER, 10	2	2	2					
3	1	22242-000100	RING, 10	2	2	2					
4	1	1N3503-53020	SPRING	1	1	1					
5	1	1N3503-53010	SPRING	1	1	1					
6	1	1N3504-51000	WIRE, CONTROL	1	1	1					
7	1	22137-080000	WASHER, 8	1	1	1					
8	1	1N3513-42160	PIN	1	1	1					

Fig.17. BRAKE LEVER

(A)=MCG950
 (B)=MCG950-2
 (C)=MCG950-PTO

(D)=
 (E)=
 (F)=

No.	Lev.	Parts No.	Description	Q'ty						I	R
				(A)	(B)	(C)	(D)	(E)	(F)		
1	1	1N3504-51010	WIRE,CONTROL	1	1						
2	1	22242-000100	RING, 10	2	2	2					
3	1	1N3503-53000	SPRING	1	1	1					
4	1	1N1210-42040	LINK,BRAKE CONNECTG	1	1	1					
5	1	22137-080000	WASHER, 8	1	1	1					
6	1	22417-250200	PIN, COTTER 2.5X20	1	1	1					
7	1	1N3503-53030	SPRING	1	1	1					
8	1	1N3503-51130	WIRE,CONTROL			1					



MISSION
 (FT25-22F)

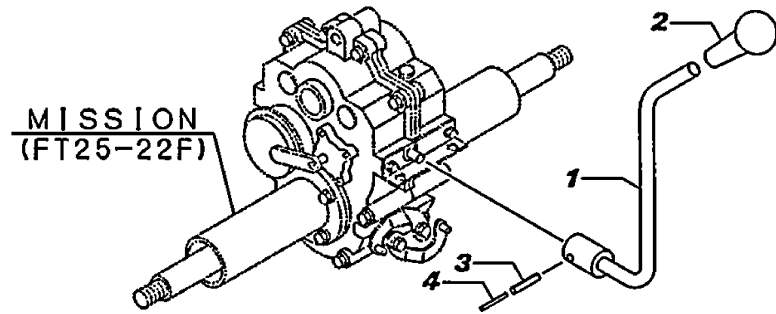
N147949

Fig.18. MAIN CHANGE LEVER

(A)=MCG950
 (B)=MCG950-2
 (C)=MCG950-PTO

(D)=
 (E)=
 (F)=

No.	Lev.	Parts No.	Description	Q'ty						I	R
				(A)	(B)	(C)	(D)	(E)	(F)		
1	1	1N3504-41000	CHANGE LEVER	1	1	1					
2	1	1N1101-44010	GRIP 10,CLUTCH	1	1	1					
3	1	22351-060030	PIN, SPRING 6.0X30	1	1	1					
4	1	22351-035030	PIN, SPRING 3.5X30	1	1	1					

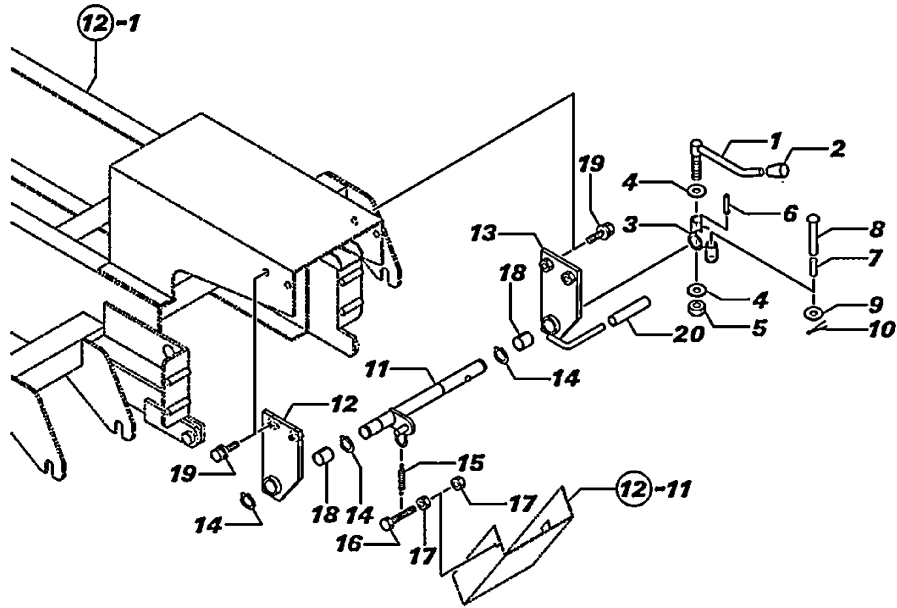


N147950

Fig.19. SUB CHANGE LEVER

(A)=MCG950
(B)=MCG950-2
(C)=MCG950-PTO

(D)=
(E)=
(F)=



N147951

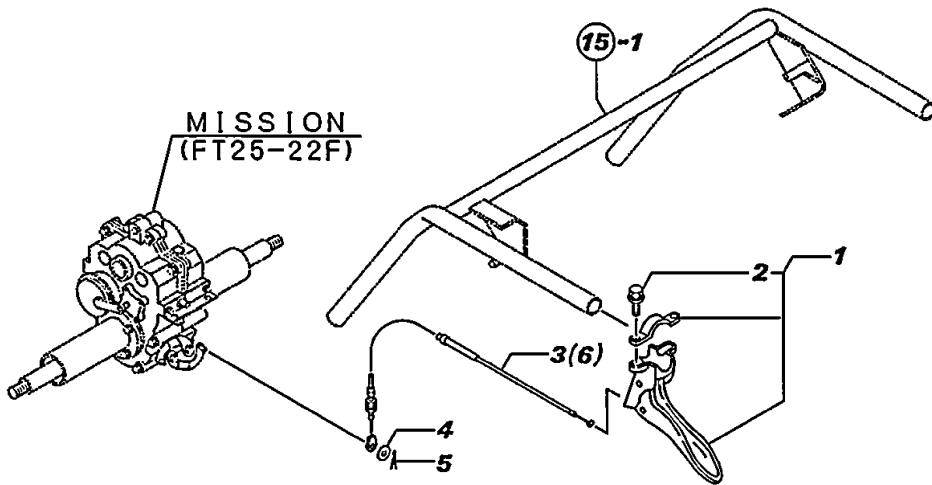
No.	Lev.	Parts No.	Description	Qty						I	R
				(A)	(B)	(C)	(D)	(E)	(F)		
1	1	1N3504-41050	LEVER	1	1	1					
2	1	1N1216-44010	GRIP	1	1	1					
3	1	1N3504-41080	LINK,SUB-CHANGE	1	1	1					
4	1	22137-100000	WASHER, 10	2	2	2					
5	1	26347-100002	NUT, M10	1	1	1					
6	1	22351-060030	PIN, SPRING 6.0X30	1	1	1					
7	1	1N1151-53020	SPRING 10.5X25,COMPR	1	1	1					
8	1	1N1340-42040	PIN,AXLE	1	1	1					
9	1	22137-100000	WASHER, 10	4	4	2					
10	1	22417-250200	PIN, COTTER 2.5X20	1	1	1					
11	1	1N3504-41020	SHAFT,LINK	1	1	1					
12	1	1N3504-22170	BRACKET,SHAFT L	1	1	1					
13	1	1N3504-22190	BRACKET,SHAFT R	1	1	1					
14	1	22242-000180	RING, 18	3	3	3					
15	1	1N3503-53030	SPRING	1	1	1					
16	1	26117-080454	BOLT M 8X 45 PLATED	1	1	1					
17	1	26757-080002	NUT, LOCK M8	2	2	2					
18	1	1E1107-62000	LINER M	2	2	2					
19	1	26018-080204	BOLT M 8X 20	4	4	4					
20	1	1N3504-22220	HOSE	1	1	1					

Fig.20. SIDE CLUTCH LEVER

(A)=MCG950
(B)=MCG950-2
(C)=MCG950-PTO

(D)=
(E)=
(F)=

No.	Lev.	Parts No.	Description	Q'ty						I	R
				(A)	(B)	(C)	(D)	(E)	(F)		
1	1	1E4490-51701	LEVER ASSY, CLUTCH L	2	2						
1-1	1	1E1140-51040	LEVER	2	2	2					S
		(A=F013067) (B=F013067)									
2	2	26014-060259	BOLT, M6X 25	2	2						
3	1	1N3503-51100	WIRE, SIDE CLUTCH	2	2						
3-1	1	1N3503-51101	WIRE, SIDE CLUTCH	2	2	1					S
		(A=F013067) (B=F013067)									
4	1	22137-080000	WASHER, 8	2	2	2					
5	1	22417-250200	PIN, COTTER 2.5X20	2	2	2					
6	1	1N3503-51141	WIRE, SIDE CLUTCH			1					

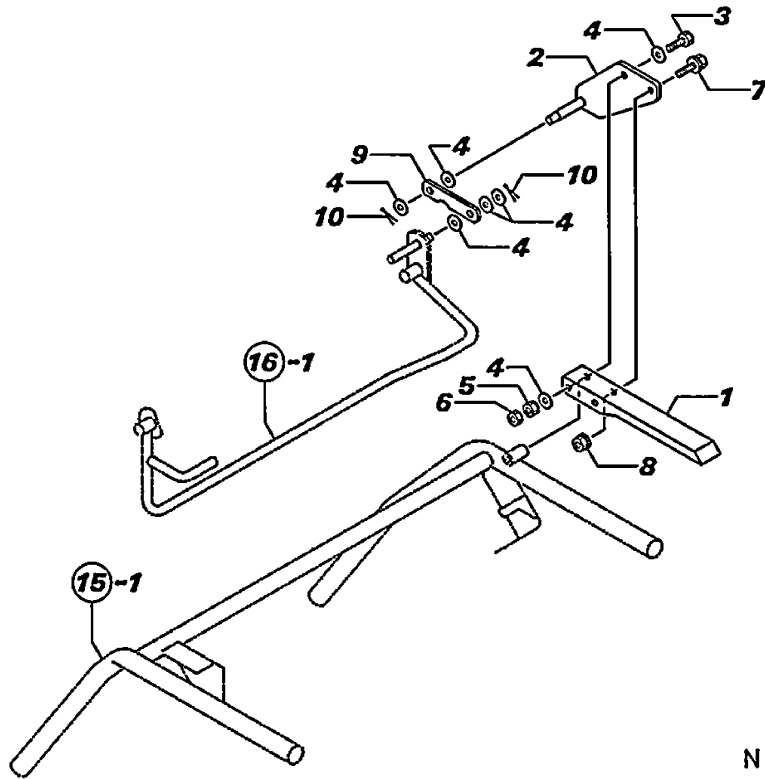


N147952

Fig.21. DEADMAN LEVER

(A)=MCG950
 (B)=MCG950-2
 (C)=MCG950-PTO

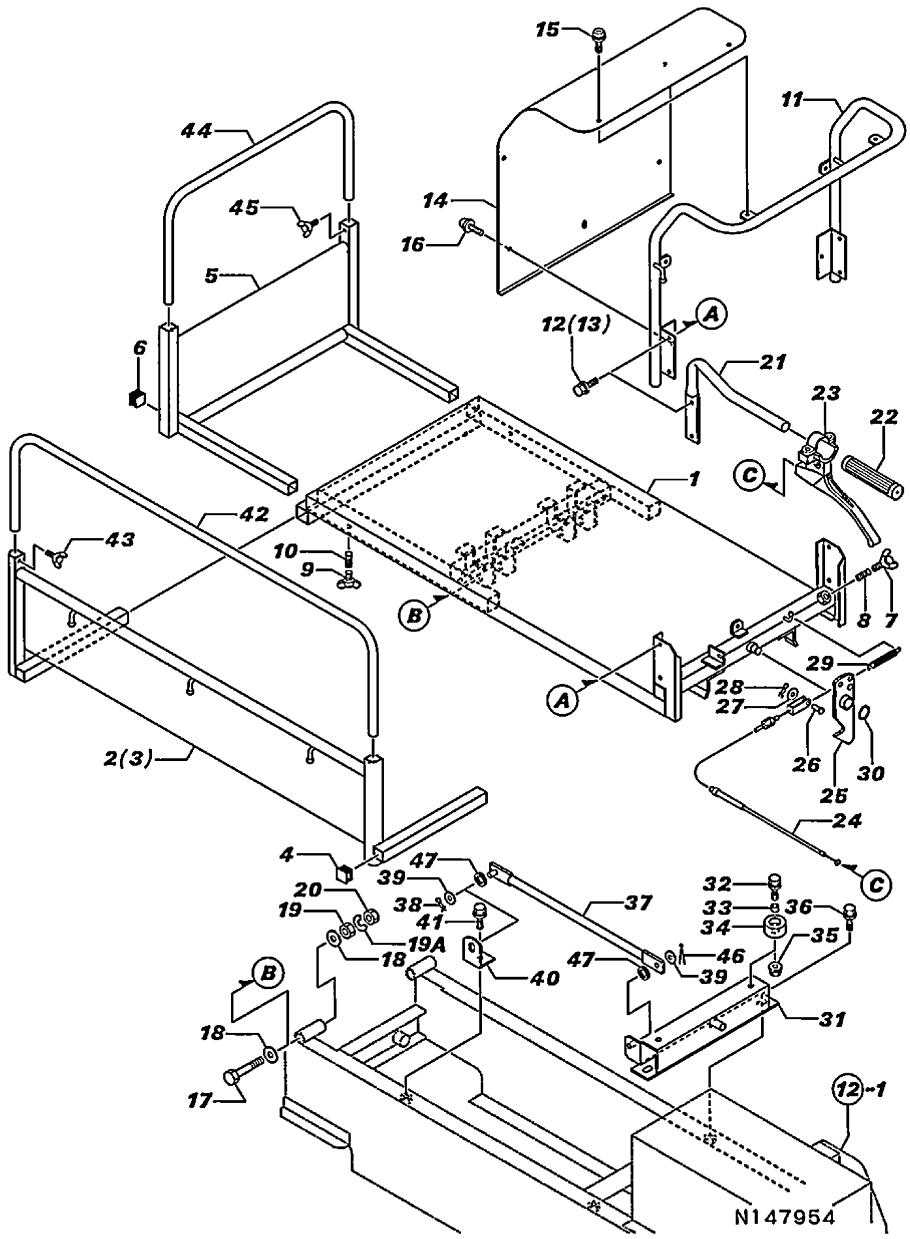
(D)=
 (E)=
 (F)=



N147953

No.	Lev.	Parts No.	Description	Qty						I	R
				(A)	(B)	(C)	(D)	(E)	(F)		
1	1	1N1723-31360	LEVER,DEADMAN	1	1	1					
2	1	1N3503-42040	BRACKET DEADMAN	1	1	1					
3	1	26116-080552	BOLT, M8X 55 PLATED	1	1	1					
4	1	22137-080000	WASHER, 8	7	7	7					
5	1	26347-080002	NUT, M8	1	1	1					
6	1	26757-080002	NUT, LOCK M8	1	1	1					
7	1	26018-080204	BOLT M 8X 20	1	1	1					
8	1	26367-080002	NUT, M8	1	1	1					
9	1	1N3503-42070	LEVER CONNECTING	1							
9-1	1	1N3503-42071	LEVER CONNECTING	1	1	1					S
		(A=F011488)									
10	1	22417-250200	PIN, COTTER 2.5X20	2	2	2					

Fig.22. PLATFORM CARRIER



(A)=MCG950
 (B)=MCG950-2
 (C)=MCG950-PTO

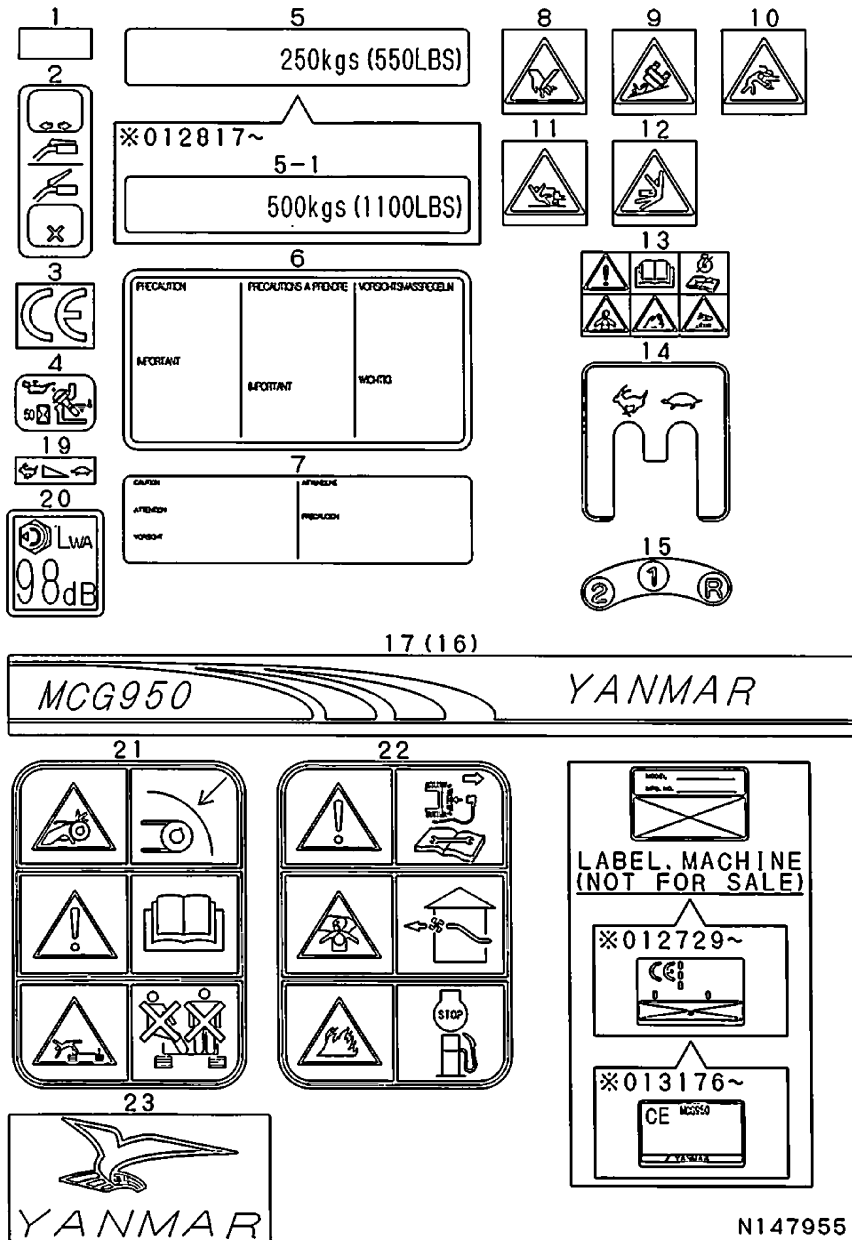
(D)=
 (E)=
 (F)=

No.	Lev.	Parts No.	Description	Qty						I	R
				(A)	(B)	(C)	(D)	(E)	(F)		
1	1	1N3503-64001	CARRIER		1						
2	1	1N3503-65000	SIDE PLATE(LEFT		1						
3	1	1N3503-65070	SIDE PLATE		1						
4	1	1N1520-53020	PLUG 25J,SQUARE OIL		4						
5	1	1N3503-66000	PLATE		1						
6	1	1N1520-53020	PLUG 25J,SQUARE OIL		2						
7	1	26647-100352	BOLT, WING M10X35		2						
8	1	1N1151-53020	SPRING 10.5X25,COMPR		2						
9	1	26647-100302	BOLT 10X30,WING		4						
10	1	1N1151-53020	SPRING 10.5X25,COMPR		4						
11	1	1N3503-66060	GUIDE		1						
12	1	26018-080254	BOLT M 8X 25		2						
13	1	26018-080204	BOLT M 8X 20		2						
14	1	1N3503-66100	PLATE,BACK		1						
15	1	1N3503-66220	SCREW 6X12		5						
16	1	1N3503-66230	SCREW 6X12		2						
17	1	26117-140902	BOLT, M14X 90 PLATED		2						
18	1	22137-140000	WASHER, 14		4						
19	1	26717-140002	NUT, M14		2						
19A	1	22217-140000	WASHER, SPRING 14		2						
20	1	26757-140002	NUT, LOCK M14		2						
21	1	1N3503-64160	LEVER, DUMP		1						
22	1	1N3503-44010	GRIP		1						
23	1	1N3503-51060	LEVER		1						
24	1	1N3503-51050	WIRE,CARRIER LOCK		1						
25	1	1N3503-64140	CARRIER LOCK		1						
26	1	1N1215-51000	PIN 6X16,RIVET		1						
27	1	22137-060000	WASHER, 6		1						
28	1	1N3513-42160	PIN		1						
29	1	1N1190-45000	SPRING 11X72.5,TENS.		1						
30	1	22242-000160	RING, 16		1						
31	1	1N3504-64030	CARRIER		1						
32	1	26018-080204	BOLT M 8X 20		2						
33	1	1N3503-64420	COLLAR 8.8X12X8		2						
34	1	1N3503-44000	RUBBER,STOPPER		2						
35	1	26367-080002	NUT, M8		2						
36	1	26018-080204	BOLT M 8X 20		2						
37	1	1N3504-64000	BAR, BODY SUPPORT		1						
38	1	1N3513-42160	PIN		1						
39	1	22137-080000	WASHER, 8		2						
40	1	1N3504-64020	RETAINER		1						
41	1	26018-080204	BOLT M 8X 20		1						
42	1	1N3503-65110	PIPE,GUIDE A		2						
43	1	26647-080152	BOLT, WING M8X15		4						
44	1	1N3503-66050	PIPE,GUIDE B		1						
45	1	26647-080152	BOLT, WING M8X15		2						
46	1	22417-250200	PIN, COTTER 2.5X20		1						
47	1	1N3503-53050	GROMMET 15		2						

Fig.23. LABELS

(A)=MCG950
(B)=MCG950-2
(C)=MCG950-PTO

(D)=
(E)=
(F)=



No.	Lev.	Parts No.	Description	Qty						I	R
				(A)	(B)	(C)	(D)	(E)	(F)		
1	1	1N1070-93050 (A=FXXXXXX) (B=FXXXXXX)	TAPE, REFLECTIVE	2	2						Z
2	1	1N3506-93260	LABEL, CLUTCH	1	1	1					
3	1	1N3506-93270 (A=F012729) (B=F012729)	LABEL CE	1	1						Z
4	1	1N3507-93160	LEVEL, OIL	1	1	1					
5	1	1N3500-93160	LABEL	1	1						
5-1	1	1N3506-93320 (A=F012817) (B=F012817)	PLATE 500K, LOADAGE	1	1	1					S
6	1	1N3506-93300 (A=FXXXXXX) (B=FXXXXXX)	LABEL	1	1						Z
7	1	1N3506-93310 (A=FXXXXXX) (B=FXXXXXX)	LABEL, CRAWLER CAUTN	1	1						Z
8	1	1N3544-93310 (A=F012729) (B=F012729)	LABEL	1	1						Z
9	1	1N3544-93320 (A=F012729) (B=F012729)	LABEL	1	1						Z
10	1	1N3544-93330 (A=F012729) (B=F012729)	LABEL	1	1						Z
11	1	1N3544-93340 (A=F012729) (B=F012729)	LABEL	1	1						Z
12	1	1N3544-93350 (A=F012729) (B=F012729)	LABEL	1	1						Z
13	1	1N3544-93360 (A=F012729) (B=F012729)	LABEL	1	1						Z
14	1	1N3504-93140	LABEL, RANGE SHIFT	1	1	1					
15	1	1N3504-93130	LABEL, CHANGE	1	1	1					
16	1	1N3504-93010 (A=F012781) (B=F012781)	STRIPE, SIDE	1	1						Z
17	1	1N3504-93020	STRIPE, SIDE	1	1						
17-1	1	1N3504-93020 (A=F012781) (B=F012781)	STRIPE, SIDE	2	2	2					K
19	1	1N3503-93190	LABEL, ACCEL	1	1	1					
20	1	1N3504-93180 (A=FXXXXXX) (B=FXXXXXX)	LABEL 98DB, NOISE	1	1	1					W
21	1	1N3563-93020 (A=F012729) (B=F012729)	LABEL, SAFETY	1	1	1					W
22	1	1N3563-93050 (A=F012729) (B=F012729)	LABEL, SAFETY	1	1	1					W
23	1	1N1289-93020 (A=F013168) (B=F013168)	LABEL	1	1	1					W

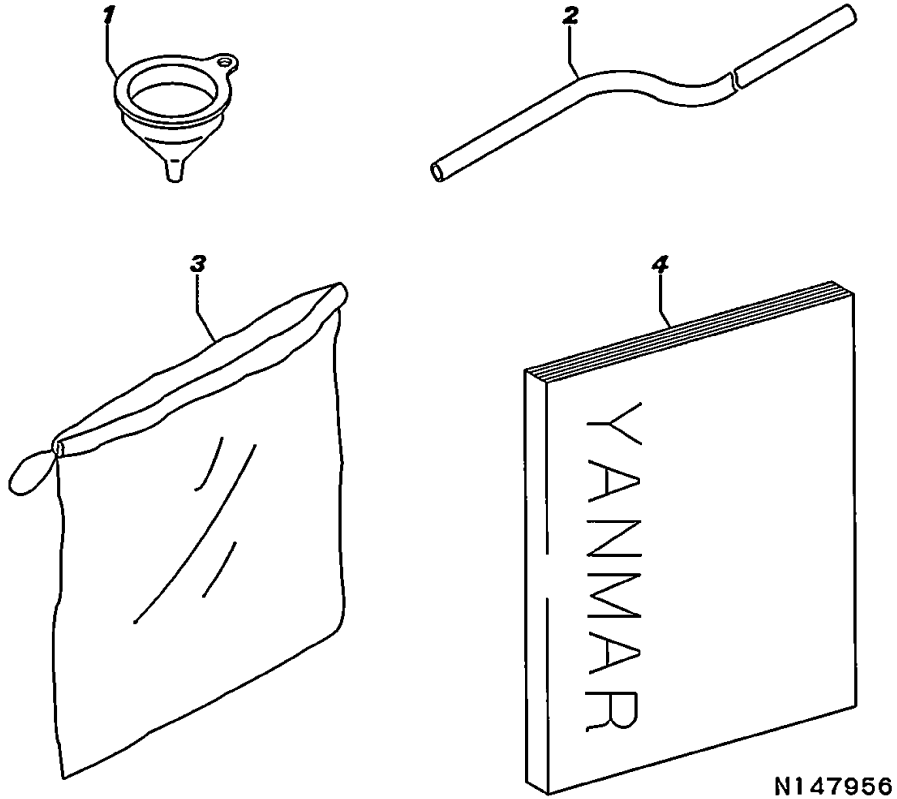
N147955

Fig.24. TOOLS & ACCESSORIES

(A)=MCG950
(B)=MCG950-2
(C)=MCG950-PTO

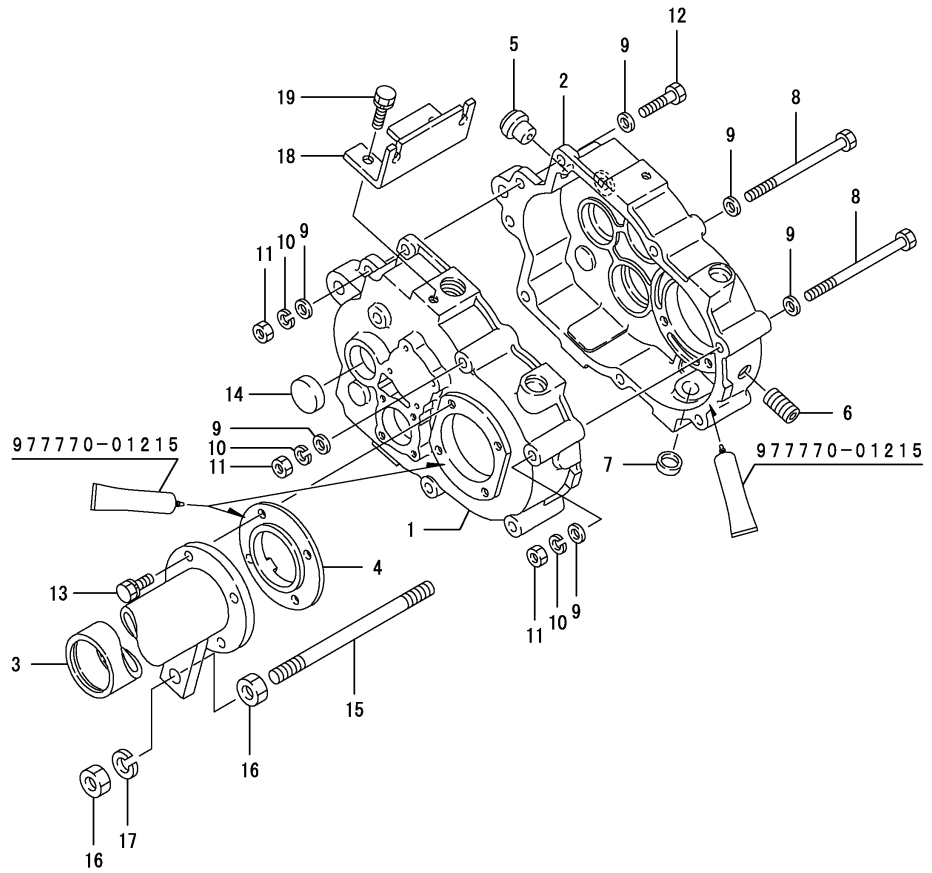
(D)=
(E)=
(F)=

No.	Lev.	Parts No.	Description	Q'ty						I	R
				(A)	(B)	(C)	(D)	(E)	(F)		
1	1	1N1070-91010 (A=F012205) (B=F012205)	FUNNEL	1	1						Z
2	1	1N1070-91020 (A=F012205) (B=F012205)	HOSE	1	1						Z
3	1	1N1070-91090 (A=F012205) (B=F012205)	BAG,TOOL	1	1						Z
4	1	1N3503-95101	MANUAL,OPERATION	1	1	1					



N147956

Fig.25. TRANSMISSION CASE



(A)=FT25-22F
(B)=
(C)=

(D)=
(E)=
(F)=

No.	Lev.	Parts No.	Description	Q'ty						I	R
				(A)	(B)	(C)	(D)	(E)	(F)		
1	1	1N3500-24000	CASE L,TRANSMISSION	1							
2	1	1N3504-24010	CASE R,TRANSMISSION	1							
3	1	1N3504-24000	HOLDER,AXLE	2							
4	1	1N3503-24020	TINE,CLUTCH	2							
5	1	1N1291-24070	PLUG,HOLED OIL	1							
6	1	1N3530-24060	PLUG PT1/4,DRAIN	1							
7	1	1N1430-24080	CAP,SEAL	2							
8	1	26117-081102	BOLT M 8X110 PLATED	4							
9	1	22137-080000	WASHER, 8	16							
10	1	22217-080000	WASHER, SPRING 8	8							
11	1	26717-080002	NUT, M8	8							
12	1	26117-080352	BOLT M 8X 35 PLATED	4							
13	1	26016-080204	BOLT M 8X 20	8							
14	1	1N1430-24000	PLUG, BLIND	1							
15	1	1N1296-24020	SCREW M12X180	1							
16	1	26717-120002	NUT, M12	4							
17	1	22217-120000	WASHER, SPRING 12	2							
18	1	1N3500-24030	BRACKET, OUTER	1							
19	1	26016-080164	BOLT M 8X 16	2							

Remarks
* 7N3504-20000 TRANSMISSION ASSY.

Fig.26. MAIN SHAFT

(A)=FT25-22F
(B)=
(C)=

(D)=
(E)=
(F)=

No.	Lev.	Parts No.	Description	Q'ty						I	R
				(A)	(B)	(C)	(D)	(E)	(F)		
1	1	1N1291-25310	SHAFT KW2,INPUT	1							
2	1	1N3504-25050	GEAR 16X19	1							
3	1	24421-173007	SEAL, OIL TC173007	1							
4	1	24101-062024	BEARING, BALL 6202	1							
5	1	1N1430-25090	COLLAR	1							
6	1	24101-062024	BEARING, BALL 6202	1							

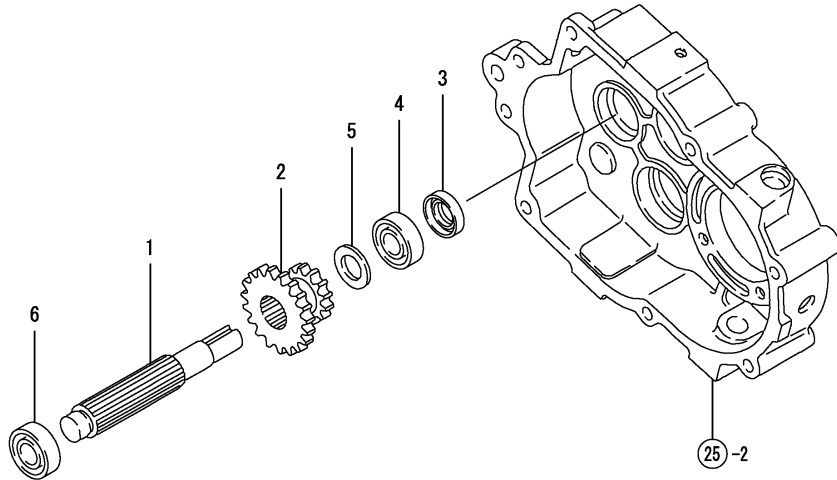


Fig.27. TRANSMISSION SHAFT B

(A)=FT25-22F
(B)=
(C)=

(D)=
(E)=
(F)=

No.	Lev.	Parts No.	Description	Q'ty						I	R
				(A)	(B)	(C)	(D)	(E)	(F)		
1	1	1N3504-25000	SHAFT, 2ND	1							
2	1	1N3504-25000	GEAR 31	1							
3	1	1N3504-25060	GEAR 41	1							
4	1	1N3504-25070	GEAR 38	1							
5	1	1N1291-25040	GEAR 16	1							
6	1	24101-062034	BEARING, BALL 6203	2							
7	1	1N1291-25050	COLLAR 20.5X26X11	1							
8	1	1N1291-25060	COLLAR 20.2X27.2X33	1							
9	1	1N1430-25090	COLLAR	2							
10	1	24421-173507	SEAL, OIL TC173507	1							

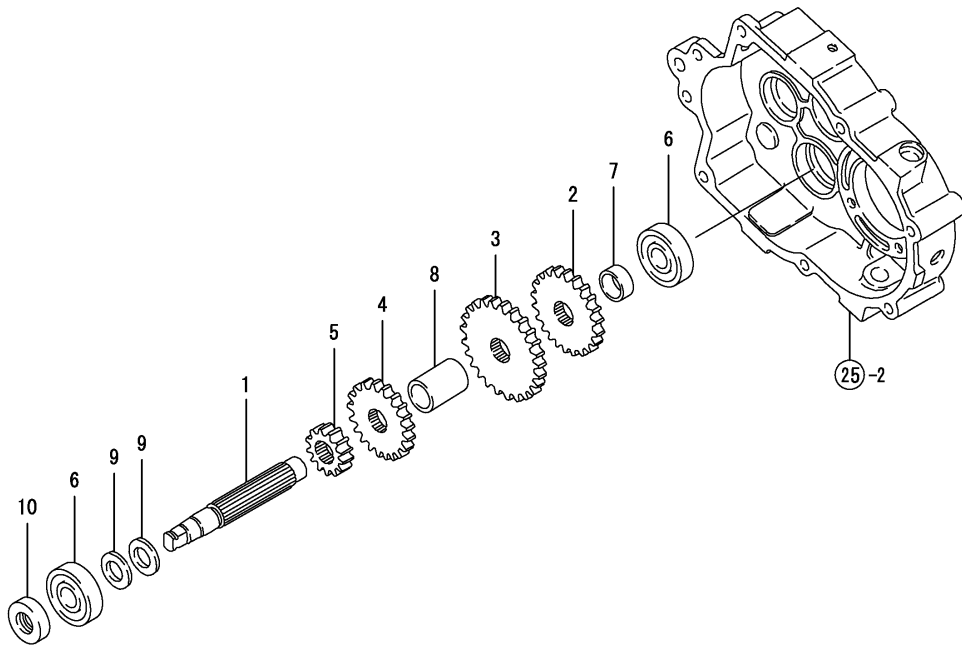


Fig.28. SIDE CLUTCH SHAFT

(A)=FT25-22F
(B)=
(C)=

(D)=
(E)=
(F)=

No.	Lev.	Parts No.	Description	Q'ty						I	R
				(A)	(B)	(C)	(D)	(E)	(F)		
1	1	1N1291-25070	SHAFT COMP.,3RD	1							
2	1	1N3504-25020	GEAR26-41	1							
3	1	24101-062034	BEARING, BALL 6203	2							
4	1	22242-000170	RING, 17	1							
5	1	1N1430-25090	COLLAR	3							
6	1	1N1291-25080	BUSH 1715	1							

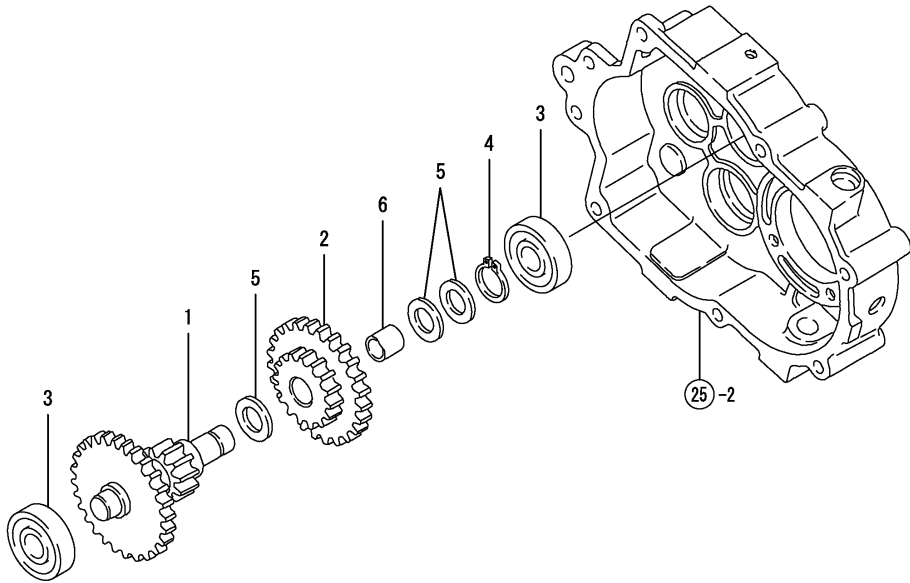


Fig.29. AXLE

(A)=FT25-22F
(B)=
(C)=

(D)=
(E)=
(F)=

No.	Lev.	Parts No.	Description	Q'ty						I	R
				(A)	(B)	(C)	(D)	(E)	(F)		
1	1	1N3504-25030	SHAFT	2							
2	1	1N1291-25100	GEAR 44	1							
3	1	1N1291-25110	GEAR 28,CLUTCH	1							
4	1	22242-000500	RING, 50	2							
5	1	1N1291-25120	PLATE,BALL SUPPORTG	2							
6	1	1N1291-25135	GEAR 28,SIDE CLUTCH	2							
7	1	22242-000250	RING, 25	4							
8	1	1N1291-25140	BOSS,DRIVE	2							
9	1	1N1291-25150	BALL 4,STEEL	42							
10	1	1N1291-25200	COVER,OIL SEAL	6							
11	1	1N1291-25170	LINER 2.0X35.5X50	2							
12	1	1N1291-25180	SPRING,CLUTCH	2							
13	1	1N1291-25190	COLLAR 25.2X31.8X27.	2							
14	1	24101-060054	BEARING, BALL 6005	4							
15	1	24421-254708	SEAL, OIL TC254708	2							
16	1	22252-000470	RING, 47	2							

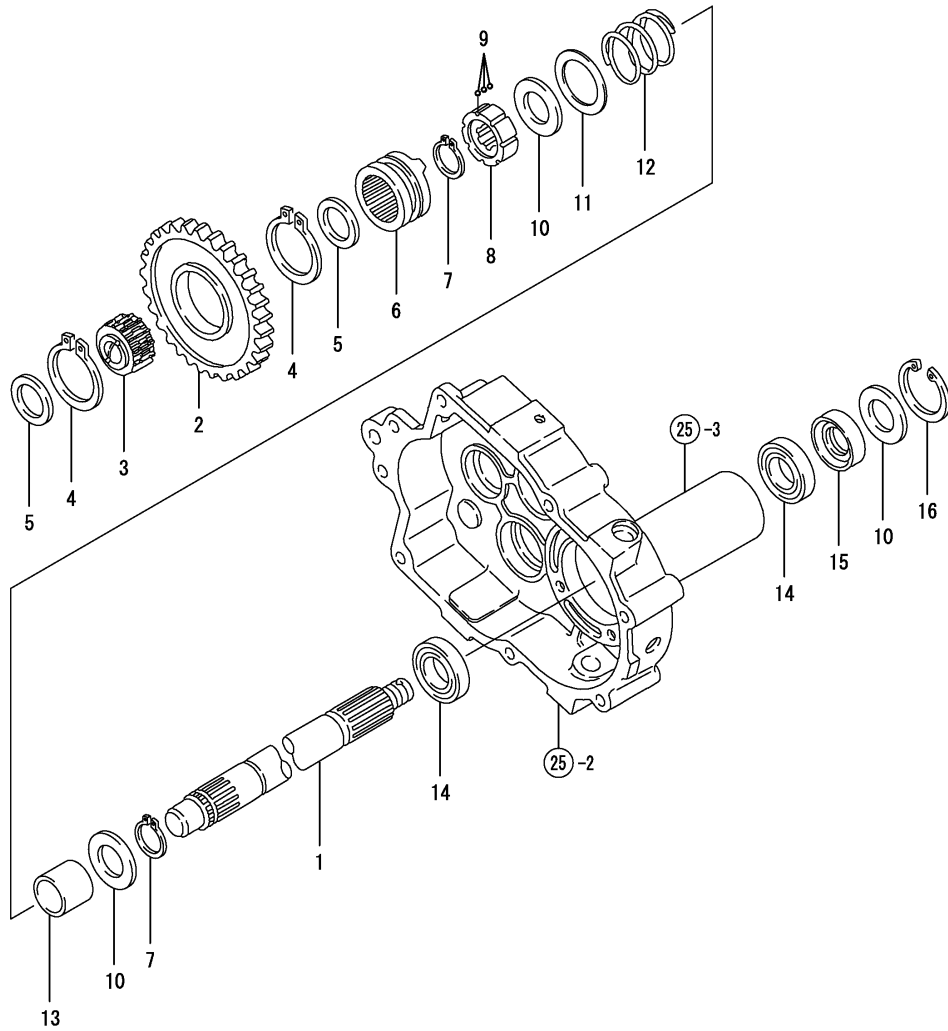


Fig.30. BRAKE

(A)=FT25-22F
(B)=
(C)=

(D)=
(E)=
(F)=

No.	Lev.	Parts No.	Description	Q'ty						I	R
				(A)	(B)	(C)	(D)	(E)	(F)		
1	1	1N3503-25220	MOUNT,BRAKE	1							
2	1	26557-060122	SCREW, M6X12	4							
3	1	22217-060000	WASHER, SPRING 6	4							
4	1	1N3503-25230	DRUM, BREAK	1							
5	1	22242-000140	RING, 14	1							
6	1	1N1291-25230	PACKING,BRAKE PLATE	1							
7	1	1N3504-25040	PLATE COMP.,BRAKE	1							
8	1	7N3503-25000	BRAKE SHOE ASSY.	1							
9	1	26016-060124	BOLT 6X12 W/L.W.	3							

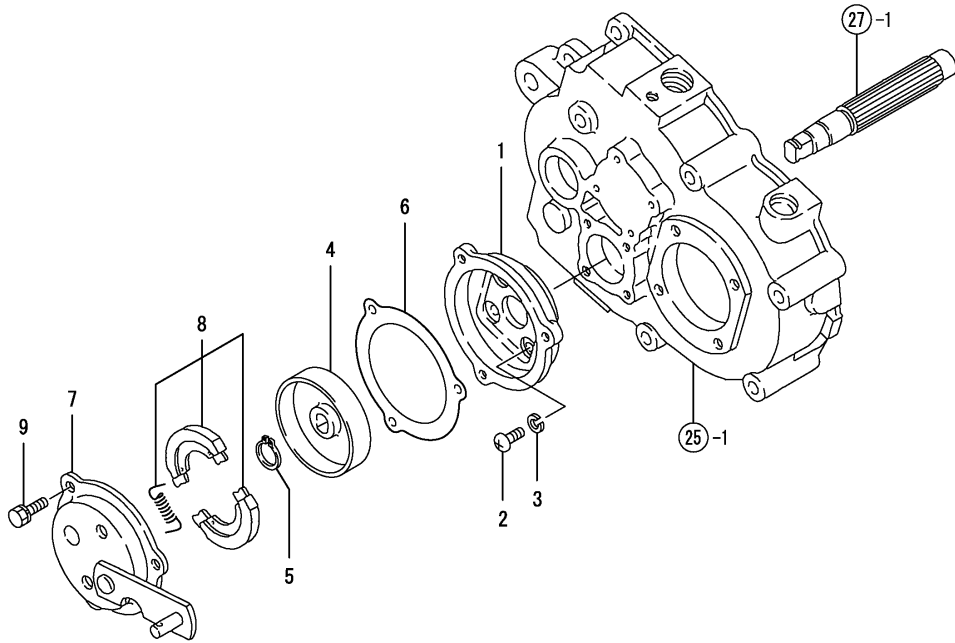
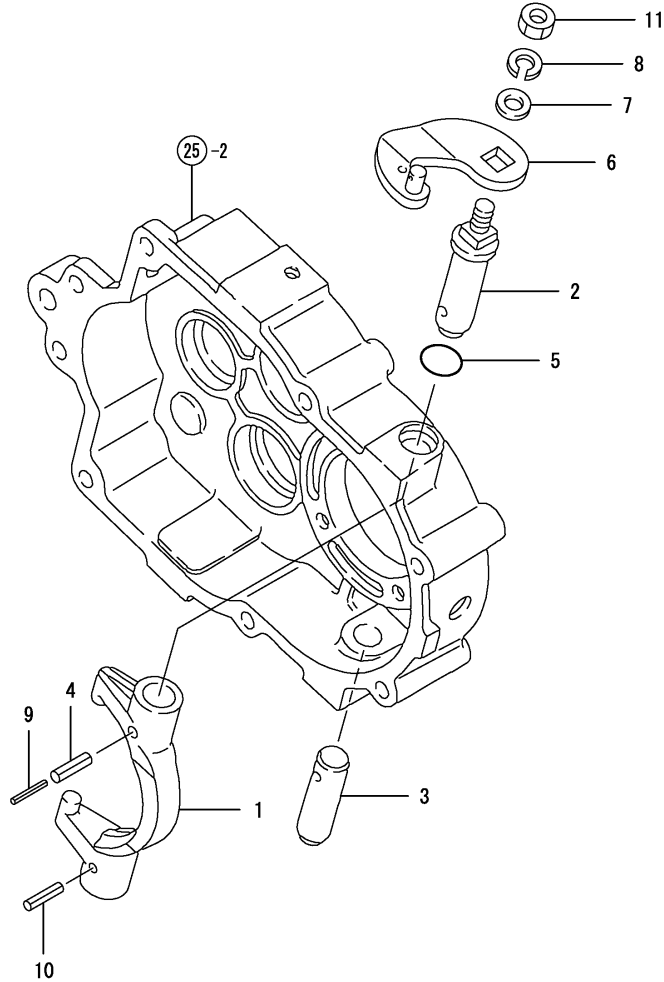


Fig.31. SIDE CLUTCH

(A)=FT25-22F
(B)=
(C)=

(D)=
(E)=
(F)=

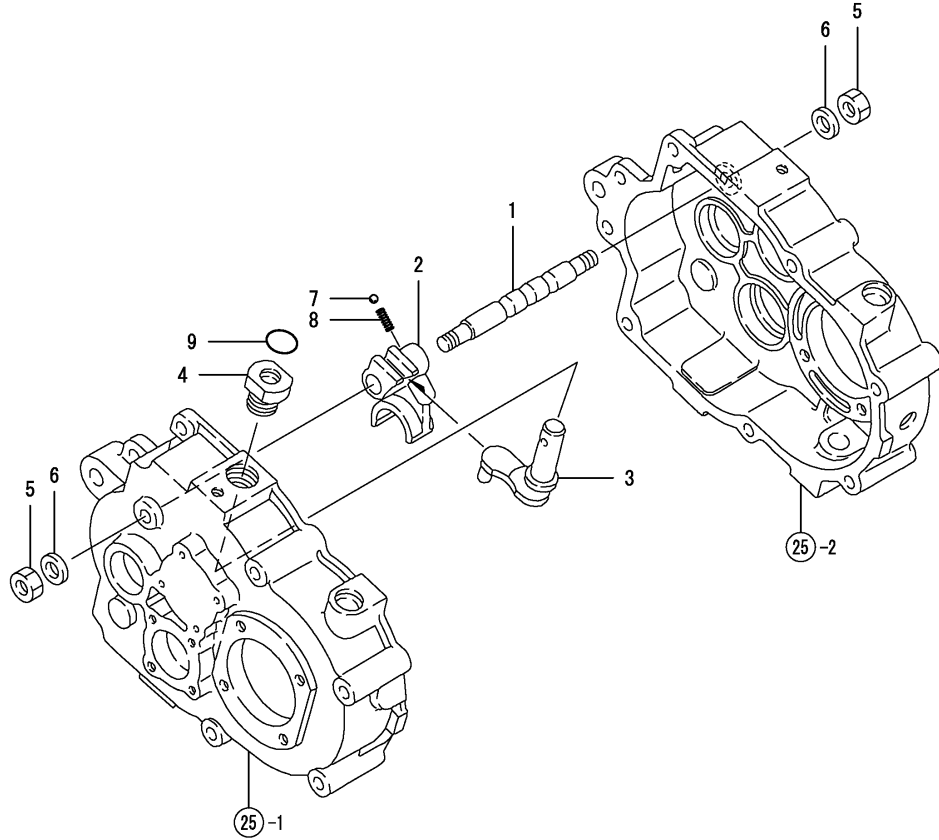


No.	Lev.	Parts No.	Description	Q'ty						I	R
				(A)	(B)	(C)	(D)	(E)	(F)		
1	1	1N3503-25180	LEVER	2							
2	1	1N3503-25190	PIN,SHIFT LEVER UPPR	2							
3	1	1N1296-25070	PIN,SHIFT LEVER LOWR	2							
4	1	22351-060022	PIN, SPRING 6.0X22	2							
5	1	24311-000140	O-RING, 1AP14.0	2							
6	1	1N3503-25210	SIDE CLUTCH LEVER	2							
7	1	22137-080000	WASHER, 8	2							
8	1	22217-080000	WASHER, SPRING 8	2							
9	1	22351-035022	PIN, SPRING 3.5X22	2							
10	1	1N3503-25310	PIN,ROLL 5X22	2							
11	1	26717-080002	NUT, M8	2							

Fig.32. MAIN CHANGE

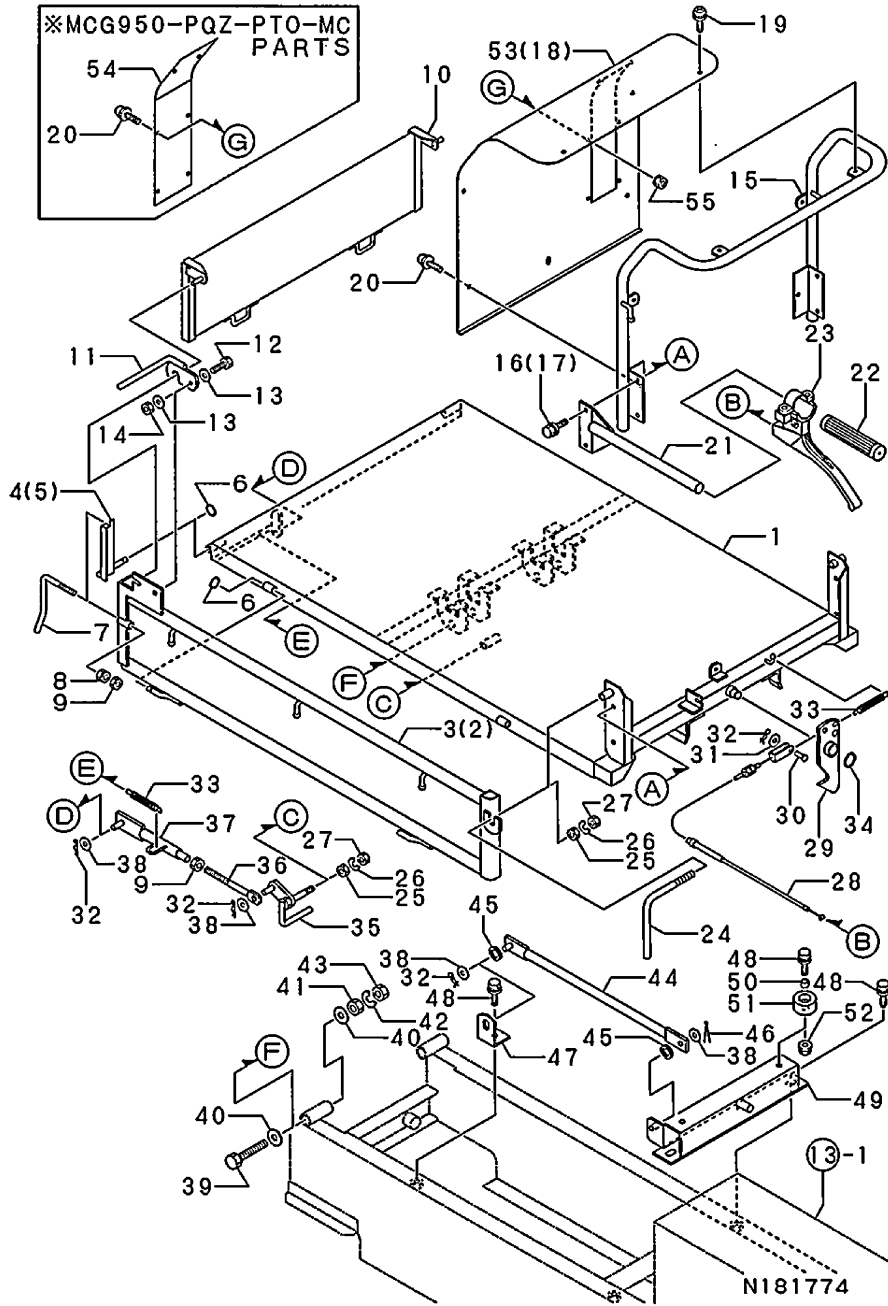
(A)=FT25-22F
(B)=
(C)=

(D)=
(E)=
(F)=



No.	Lev.	Parts No.	Description	Q'ty						I	R
				(A)	(B)	(C)	(D)	(E)	(F)		
1	1	1N1291-26000	ROD,SHIFTER	1							
2	1	1N1291-26010	SHIFTER,GEAR	1							
3	1	1N3504-26000	LEVER,SHIFT	1							
4	1	1N1291-26030	GUIDE,SHIFT LEVER	1							
5	1	26717-100002	NUT, M10	2							
6	1	1N1430-26030	WASHER,SEAL	2							
7	1	1N1150-25010	BALL 8,STEEL	1							
8	1	1N1291-26040	SPRING,FORK	1							
9	1	24311-000140	O-RING, 1AP14.0	1							

Fig.33. PLATFORM CARRIER(ADD.ITEM)



(A)=MCG950
(B)=MCG950-2
(C)=MCG950-PTO

(D)=
(E)=
(F)=

No.	Lev.	Parts No.	Description	Q'ty						I	R
				(A)	(B)	(C)	(D)	(E)	(F)		
1	1	1N3503-74010	CARRIER H,PLATFORM	1	1						
2	1	1N3503-65380	PLATE L,SIDE	1	1						
3	1	1N3503-65370	BOARD R,SIDE	1	1						
4	1	1N3503-64930	FIXTURE L,SIDE PLATE	1	1						
5	1	1N3503-64920	FIXTURE R,SIDE PLATE	1	1						
6	1	22272-000070	RING, E- 7	4	4						
7	1	1N3542-65050	HANDLE,SET	2	2						
8	1	26051-080002	NUT, M8	4	4						
9	1	26757-080002	NUT, LOCK M8	5	5						
10	1	1N3503-66380	FRONT PLATE	1	1						
11	1	1N1540-66240	LEVER,LOCK	2	2						
12	1	26117-100254	BOLT, M10X 25 PLATED	2	2						
13	1	22137-100000	WASHER, 10	4	4						
14	1	26347-100002	NUT, M10	2	2						
15	1	1N3503-66350	REAR PLATE	1	1						
16	1	26018-080254	BOLT M 8X 25	2	2						
17	1	26018-080204	BOLT M 8X 20	2	1						
18	1	1N3503-66370	PLATE,BACK	1	1						
19	1	1N3503-66220	SCREW 6X12	5	5						
20	1	1N3503-66230	SCREW 6X12	2	8						
21	1	1N3503-74180	LEVER, DUMP	1	1						
22	1	1N3503-44010	GRIP	1	1						
23	1	1N3503-51060	LEVER	1	1						
24	1	1N3501-65000	HANDLE 90X95,SET	2	2						
25	1	26717-100002	NUT, M10	3	3						
26	1	22217-100000	WASHER, SPRING 10	3	3						
27	1	26757-100002	NUT, LOCK M10	3	3						
28	1	1N3503-51050	WIRE,CARRIER LOCK	1	1						
29	1	1N3503-64140	CARRIER LOCK	1	1						
30	1	1N1215-51000	PIN 6X16,RIVET	1	1						
31	1	22137-060000	WASHER, 6	1	1						
32	1	1N3513-42160	PIN	4	4						
33	1	1N1190-45000	SPRING 11X72.5,TENS.	2	2						
34	1	22242-000160	RING, 16	1	1						
35	1	1N3503-64970	LINK, LOCK	1	1						
36	1	1N1360-22090	SCREW 8X94,ADJUST	1	1						
37	1	1N3503-64910	ROD B,LOCK	1	1						
38	1	22137-080000	WASHER, 8	4	4						
39	1	26117-140902	BOLT, M14X 90 PLATED	2	2						
40	1	22137-140000	WASHER, 14	4	4						
41	1	26717-140002	NUT, M14	2	2						
42	1	22217-140000	WASHER, SPRING 14	2	2						
43	1	26757-140002	NUT, LOCK M14	2	2						
44	1	1N3504-64000	BAR, BODY SUPPORT	1	1						
45	1	1N3503-53050	GROMMET 15	2	2						
46	1	22417-250200	PIN, COTTER 2.5X20	1	1						
47	1	1N3504-64020	RETAINER	1	1						
48	1	26018-080204	BOLT M 8X 20	5	5						
49	1	1N3504-64030	CARRIER	1	1						
50	1	1N3503-64420	COLLAR 8.8X12X8	2	2						
51	1	1N3503-44000	RUBBER,STOPPER	2	2						

Fig.34. PTO LEVER(ADD.ITEM

(A)=MCG950
 (B)=MCG950-2
 (C)=MCG950-PTO

(D)=
 (E)=
 (F)=

No.	Lev.	Parts No.	Description	Qty						I	R
				(A)	(B)	(C)	(D)	(E)	(F)		
1	1	1N3504-67230	LEVER,PTO			1					
2	1	1N1101-44030	GRIP 10,BRAKE RED			1					
3	1	1N3504-67220	LINK LEVER,PTO			1					
4	1	26116-060302	BOLT, M6X 30 PLATED			2					
5	1	26347-060002	NUT, M6			2					
6	1	1N1240-42050	LINK,CRESCENT			1					
7	1	22137-080000	WASHER, 8			1					
8	1	1N3513-42160	PIN			1					
9	1	1N1210-53030	SPRING 21.5X78,TENS.			1					
10	1	1N3504-67200	LINK,TENSION			1					
11	1	1N1190-45000	SPRING 11X72.5,TENS.			1					
12	1	1N3504-67161	LINK HOLDER			1					
13	1	1N3504-67130	BASE,TENSION			1					
14	1	26018-080202	BOLT, M8X 20			2					
15	1	26367-080002	NUT, M8			3					
16	1	26117-060304	BOLT M 6X 30 PLATED			1					
17	1	26757-060002	NUT, LOCK M6			3					
18	1	26051-060002	NUT, M6			1					
19	1	26117-060164	BOLT M 6X 16			1					
20	1	26018-080254	BOLT M 8X 25			1					
21	1	1N1185-42120	WASHER 9X25X3.2			1					
22	1	26018-060164	BOLT M 6X 16			1					

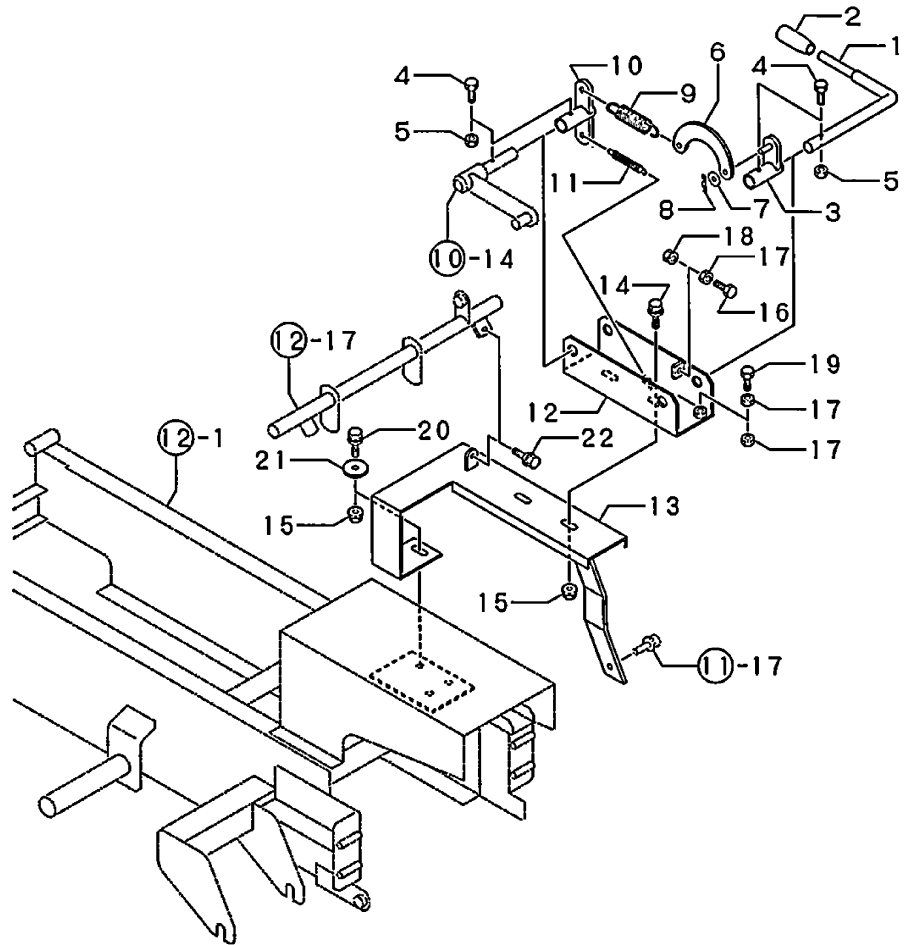
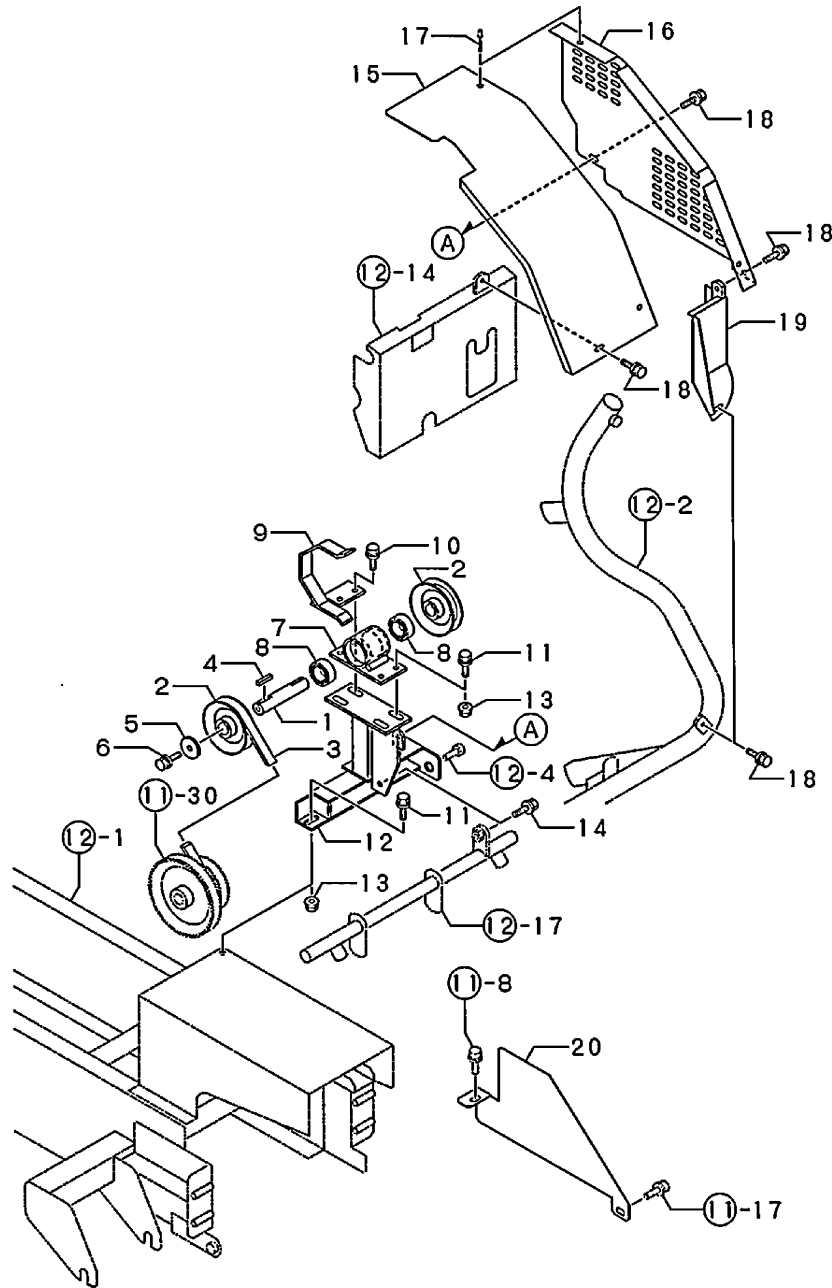


Fig.35. COUNTER SHAFT(ADD.ITEM)

(A)=MCG950
 (B)=MCG950-2
 (C)=MCG950-PTO

(D)=
 (E)=
 (F)=



No.	Lev.	Parts No.	Description	Qty						I	R
				(A)	(B)	(C)	(D)	(E)	(F)		
1	1	1N3504-67240	CARRIER H,PLATFORM			1					
2	1	1N1386-21000	V-PULLEY B3.5X1,PUMP			2					
3	1	25123-002501	V-BELT, B25H			1					
4	1	22550-050250	KEY 5X25			2					
5	1	1E1100-21230	WASHER, 9.0X35X4.5			2					
6	1	26018-080202	BOLT, M8X 20			2					
7	1	1N3504-67080	CASE SHAFT ,COUNTER			1					
8	1	24104-060044	BEARING, BALL 6004UU			2					
9	1	1N3504-67250	BELT GUIDE			1					
10	1	26018-080254	BOLT M 8X 25			2					
11	1	26018-080204	BOLT M 8X 20			3					
12	1	1N3504-67000	BASE SHAFT,COUNTER			1					
13	1	26367-080002	NUT, M8			5					
14	1	26018-080164	BOLT M 8X 16			1					
15	1	1N3504-67300	COVER A,PTO			1					
16	1	1N3504-67310	COVER B,PTO			1					
17	1	1N3503-58120	RIVET			2					
18	1	1N3513-69050	BOLT 6X12			4					
19	1	1N3504-67320	COVER,STEP			1					
20	1	1N3504-67290	COVER,TRANSM.PULLEY			1					

Parts No. Index

Parts No.	Fig. No.	Ref. No.
104200-59170	1	9
		17
106990-44660	6	24
114250-45310	6	1
114252-13950	4	14
		23
114270-01600	1	5
114299-01760	1	18
114299-01950	1	20
114770-61600	8	35
119520-03990	6	27 -1
124060-77680	6	27
160110-92610	3	8
160110-92710	3	10
160120-76940	8	9
160120-92700	3	9
160310-14550	5	32
160310-56980	7	14
160310-56990	7	15
160330-56740	7	6
160393-55050	6	11
160490-14200	5	10
160493-12550	4	6
160495-77260	9	33
160520-66291	8	22
160590-11010	2	5
160590-11011	2	5 -1
160590-11100	2	10
160590-11110	2	11
160590-14051	5	1
160590-14400	5	11
160590-14571	5	9
160590-21200	5	17
160590-21210	5	18
160590-22300	5	27
160590-45130	9	1
160590-56530	7	5
160590-78532	9	28
160590-78533	9	28 -1
160590-78542	9	27
160592-56540	7	2
160594-66011	8	11
160598-01330	2	3
160598-01331	2	3 -1
160598-22010	5	21
160598-56090	7	1
160598-56091	7	1 -1
160598-56160	4	10
160598-56570	7	21
160598-56590	7	24

Parts No.	Fig. No.	Ref. No.
160598-56640	7	13
160598-56660	7	20
160610-01690	1	8
		16
160610-02220	1	6
		13
160610-04201	2	4
160610-04630	4	1
160610-04910	5	13
160610-21290	5	19
160610-55100	6	12
160610-56151	4	7
		9
		33
160610-56610	7	19
160610-56630	7	12
160611-77250	9	32
160640-56850	7	26
160664-07370	3	6
160664-66220	8	25
160667-56750	7	27
160670-66350	8	26
160690-03050	2	1
160690-04350	9	30 -1
160690-07260	3	5
160690-11120	2	12
160690-11180	2	13
160690-11200	2	14
160690-11221	2	15
160690-11222	2	15 -1
160690-11271	2	16
160690-11280	2	17
160690-11290	2	18
160690-11300	2	20
160690-11310	2	21
160690-11311	2	21 -1
160690-12510	4	3
160690-12530	4	4
160690-12600	4	2
160690-13200	4	11
160690-13201	4	11 -1
160690-13500	4	20
160690-13550	4	12
160690-13700	4	17
160690-13900	4	13
160690-13911	4	18
160690-13912	4	18 -1
160690-55140	6	15
160690-55461	6	14
160690-55462	6	14 -1

Parts No.	Fig. No.	Ref. No.
160690-56160	7	34
160690-56560	7	3
160690-56570	7	4
160690-56751	7	25
160690-61301	8	2
160690-61311	8	3
160690-61450	8	4
160690-61600	8	5
160690-66111	8	18
160690-66143	8	19
160690-66180	8	29
160690-66200	8	32
160690-66210	8	33
160690-66310	8	36
160690-76251	9	6
160690-76511	9	7
160690-76521	9	8
160690-76531	9	11
160690-76540	9	12
160690-76561	9	13
160690-76570	9	14
160690-76591	9	19
160690-76620	9	17
160690-76630	9	16
160690-76801	9	9
160690-76830	9	18
160690-78230	9	29
		36
160692-55300	6	16
160692-56560	7	32
160692-56700	7	30
160692-56710	7	7
160692-56770	7	29
160692-56800	7	31
160692-66051	8	13
160692-66101	8	12
160697-56650	7	16
160698-13560	4	21
160698-13620	4	19
160698-76580	9	10
160699-45010	9	35
160699-45200	9	3
160700-78040	9	22
160700-78050	9	23
160700-78720	9	24
160702-56720	7	28
160710-55061	6	4
160710-55360	6	19
160710-55370	6	20
160710-55382	6	21

Parts No.	Fig. No.	Ref. No.
160710-55390	6	22
160710-78710	6	28
160760-12530	4	5
160762-55150	6	13
160769-56620	7	11
160793-78010	9	21
160798-07100	3	4
160802-59371	6	25
160810-56580	7	17
160810-56590	7	18
160820-59391	6	26
160893-56650	7	22
160893-56660	7	23
160991-07260	3	3
160998-03190	2	2
181230-56380	7	8
1E1100-21230	35	5
1E1102-71190	14	25
1E1107-62000	19	18
1E1107-62040	14	24
1E1140-51040	20	1 -1
1E4490-51701	20	1
1E6020-83890	11	13
		26
1N1070-91010	24	1
1N1070-91020	24	2
1N1070-91090	24	3
1N1070-93050	23	1
1N1091-36000	14	8
1N1101-36041	14	7 -1
1N1101-44010	18	2
1N1101-44030	34	2
1N1150-25010	32	7
1N1151-53020	19	7
	22	8
		10
1N1185-42120	34	21
1N1190-45000	10	11
	22	29
	33	33
	34	11
1N1210-42040	17	4
1N1210-53030	34	9
1N1215-51000	22	26
	33	30
1N1216-44010	19	2
1N1240-42050	34	6
1N1289-93020	23	23
1N1291-22020	11	32
1N1291-24070	25	5

Parts No. Index

Parts No.	Fig. No.	Ref. No.
1N1291-25040	27	5
1N1291-25050	27	7
1N1291-25060	27	8
1N1291-25070	28	1
1N1291-25080	28	6
1N1291-25100	29	2
1N1291-25110	29	3
1N1291-25120	29	5
1N1291-25135	29	6
1N1291-25140	29	8
1N1291-25150	29	9
1N1291-25170	29	11
1N1291-25180	29	12
1N1291-25190	29	13
1N1291-25200	29	10
1N1291-25230	30	6
1N1291-25310	26	1
1N1291-26000	32	1
1N1291-26010	32	2
1N1291-26030	32	4
1N1291-26040	32	8
1N1291-58080	11	25
		27
	12	12
1N1296-24020	25	15
1N1296-25070	31	3
1N1313-44000	15	2
1N1340-42040	19	8
1N1360-22090	33	36
1N1386-21000	35	2
1N1430-22070	10	3
1N1430-24000	25	14
1N1430-24080	25	7
1N1430-25090	26	5
	27	9
	28	5
1N1430-26030	32	6
1N1520-53020	22	4
		6
1N1540-66240	33	11
1N1550-22040	11	11 -1
1N1723-31360	21	1
1N3500-24000	25	1
1N3500-24030	25	18
1N3500-93160	23	5
1N3501-35020	14	4
1N3501-35030	14	16
1N3501-36010	14	3
1N3501-65000	33	24
1N3502-21020	11	29

Parts No.	Fig. No.	Ref. No.
1N3502-22170	11	4
1N3503-16000	11	18
1N3503-24020	25	4
1N3503-25180	31	1
1N3503-25190	31	2
1N3503-25210	31	6
1N3503-25220	30	1
1N3503-25230	30	4
1N3503-25310	31	10
1N3503-35060	14	11
1N3503-35070	13	2
1N3503-36000	14	22
1N3503-37000	13	7
1N3503-42000	16	1
1N3503-42001	16	1 -1
1N3503-42040	21	2
1N3503-42070	21	9
1N3503-42071	21	9 -1
1N3503-44000	22	34
	33	51
1N3503-44010	22	22
	33	22
	15	1
1N3503-47000	15	1 -1
1N3503-47001	15	6 A
1N3503-51010	15	6
1N3503-51050	22	24
	33	28
1N3503-51060	22	23
	33	23
1N3503-51100	20	3
1N3503-51101	20	3 -1
1N3503-51130	17	8
1N3503-51141	20	6
1N3503-53000	17	3
1N3503-53010	16	5
1N3503-53020	16	4
1N3503-53030	17	7
	19	15
1N3503-53050	22	47
	33	45
1N3503-58120	11	23
	35	17
1N3503-64001	22	1
1N3503-64140	22	25
	33	29
1N3503-64160	22	21
1N3503-64420	22	33
	33	50
1N3503-64910	33	37
1N3503-64920	33	5

Parts No.	Fig. No.	Ref. No.
1N3503-64930	33	4
1N3503-64970	33	35
1N3503-65000	22	2
1N3503-65070	22	3
1N3503-65110	22	42
1N3503-65370	33	3
1N3503-65380	33	2
1N3503-66000	22	5
1N3503-66050	22	44
1N3503-66060	22	11
1N3503-66100	22	14
1N3503-66220	22	15
	33	19
1N3503-66230	22	16
	33	20
	33	15
1N3503-66350	33	15
1N3503-66370	33	18
1N3503-66380	33	10
1N3503-74010	33	1
1N3503-74180	33	21
1N3503-93190	23	19
1N3503-95101	24	4
1N3504-21000	11	1
1N3504-21010	11	3
1N3504-21020	11	30
1N3504-22000	11	14
1N3504-22010	11	16
1N3504-22030	11	7
1N3504-22070	11	9
1N3504-22080	11	11
1N3504-22100	10	1
1N3504-22140	10	2
1N3504-22170	19	12
1N3504-22190	19	13
1N3504-22220	19	20
1N3504-24000	25	3
1N3504-24010	25	2
1N3504-25000	27	1
		2
1N3504-25020	28	2
1N3504-25030	29	1
1N3504-25040	30	7
1N3504-25050	26	2
1N3504-25060	27	3
1N3504-25070	27	4
1N3504-26000	32	3
1N3504-31000	12	1
1N3504-35000	13	8
1N3504-41000	18	1
1N3504-41020	19	11

Parts No.	Fig. No.	Ref. No.
1N3504-41050	19	1
1N3504-41080	19	3
1N3504-41110	15	3
1N3504-51000	16	6
1N3504-51010	17	1
1N3504-53000	14	12
1N3504-54000	12	2
1N3504-54071	12	3
1N3504-58000	12	11
1N3504-58020	11	22
1N3504-58030	11	21
1N3504-58040	12	14
1N3504-58061	12	8
1N3504-58070	12	9
1N3504-64000	22	37
	33	44
1N3504-64020	22	40
	33	47
1N3504-64030	22	31
	33	49
1N3504-66000	33	53
1N3504-66010	33	54
1N3504-67000	35	12
1N3504-67080	35	7
1N3504-67110	12	17
1N3504-67130	34	13
1N3504-67161	34	12
1N3504-67180	10	14
1N3504-67200	34	10
1N3504-67220	34	3
1N3504-67230	34	1
1N3504-67240	35	1
1N3504-67250	35	9
1N3504-67280	11	31
1N3504-67290	35	20
1N3504-67300	35	15
1N3504-67310	35	16
1N3504-67320	35	19
1N3504-93010	23	16
1N3504-93020	23	17
		17 -1
1N3504-93130	23	15
1N3504-93140	23	14
1N3504-93180	23	20
1N3505-33040	14	23
1N3506-35020	13	6
1N3506-93260	23	2
1N3506-93270	23	3
1N3506-93300	23	6
1N3506-93310	23	7

Parts No. Index

Parts No.	Fig. No.	Ref. No.
1N3506-93320	23	5 -1
1N3507-93160	23	4
1N3513-42160	16	8
	22	28
		38
	33	32
	34	8
1N3513-69050	11	24
	12	10
		13
		15
	35	18
1N3514-22000	10	7
1N3514-42440	10	8
1N3520-35020	14	8 -1
1N3520-36230	14	3 -1
1N3530-24060	25	6
1N3542-65050	33	7
1N3544-93310	23	8
1N3544-93320	23	9
1N3544-93330	23	10
1N3544-93340	23	11
1N3544-93350	23	12
1N3544-93360	23	13
1N3561-51070	15	7
1N3563-36010	14	4 -1
1N3563-93020	23	21
1N3563-93050	23	22
22137-060000	22	27
	33	31
22137-080000	11	19
	16	7
	17	5
	20	4
	21	4
	22	39
	25	9
	31	7
	33	38
	34	7
22137-100000	14	20
	16	2
	19	4
		9
	33	13
22137-120000	13	13
	14	9
22137-140000	12	6
	22	18
	33	40

Parts No.	Fig. No.	Ref. No.
22137-160000	14	13
22217-060000	30	3
22217-080000	25	10
	31	8
22217-100000	33	26
22217-120000	10	9
	13	12
	14	9 A
		26
	25	17
22217-140000	12	5
	13	10
	22	19 A
	33	42
22242-000100	16	3
	17	2
22242-000140	30	5
22242-000150	10	4
	14	6
22242-000160	22	30
	33	34
22242-000170	28	4
22242-000180	10	12
	19	14
22242-000200	14	6 -1
22242-000250	13	5
	29	7
22242-000500	29	4
22252-000130	5	28
22252-000350	10	6
22252-000470	29	16
22272-000070	33	6
22351-035022	31	9
22351-035030	18	4
22351-060022	31	4
22351-060030	18	3
	19	6
22372-080000	8	10
22417-250200	17	6
	19	10
	20	5
	21	10
	22	46
	33	46
22417-400400	14	15
22512-040120	5	12
22512-040160	5	20
22512-050300	5	33
22550-050250	35	4
22550-050251	11	6

Parts No.	Fig. No.	Ref. No.
23061-030180	7	35
24101-060024	14	5
24101-060044	14	5 -1
24101-060054	13	3
	29	14
24101-062024	26	4
		6
24101-062034	27	6
	28	3
24101-062040	1	7
		14
24104-060044	35	8
24104-062024	10	5
24311-000140	31	5
	32	9
24421-153206	14	7
24421-173007	26	3
24421-173507	27	10
24421-254708	29	15
24421-304707	13	4
25123-002501	35	3
25123-003001	11	2
26014-060259	20	2
26016-060124	30	9
26016-060164	11	5
26016-080164	25	19
26016-080204	25	13
26018-060164	34	22
26018-080164	11	10
		10 -1
		12
		15
		17
	35	14
26018-080202	34	14
	35	6
26018-080204	19	19
	21	7
	22	13
		32
		36
		41
	33	17
		48
	35	11
26018-080254	22	12
	33	16
	34	20
	35	10
26018-100254	11	8

Parts No.	Fig. No.	Ref. No.
26018-100254	12	7
		16
26051-060002	33	55
	34	18
26051-080002	11	20
	33	8
26052-100002	14	17
26106-060082	4	22
	9	20
26106-060102	6	23
26106-060162	8	37
26106-060202	2	22
26106-060302	5	31
26106-060352	2	23
26106-080142	4	15
26106-080202	5	34
26116-060302	34	4
26116-080552	21	3
26117-040088	8	17
26117-040257	8	23
26117-040357	8	24
26117-060164	34	19
26117-060304	34	16
26117-080352	25	12
26117-080454	19	16
26117-081102	25	8
26117-100254	15	4
	33	12
26117-100702	14	19
26117-120254	13	11
	14	27
26117-140454	12	4
26117-140902	22	17
	33	39
26117-141504	13	9
26216-080182	2	19
26347-060002	8	27
	34	5
26347-080002	21	5
26347-100002	19	5
	33	14
26366-060002	4	8
	8	31
26366-080002	4	16
	9	34
26367-060002	11	28
26367-080002	11	33
	21	8
	22	35
	33	52

Parts No. Index

Parts No.	Fig. No.	Ref. No.
26367-080002	34	15
	35	13
26476-060142	8	34
	9	2
		4
26476-060252	1	21
26476-060302	9	30
26557-060122	30	2
26647-080152	22	43
		45
26647-100302	22	9
26647-100352	22	7
26717-080002	25	11
	31	11
26717-100002	32	5
	33	25
26717-120002	14	10
	25	16
26717-140002	22	19
	33	41
26756-060002	8	28 -1
26757-060002	8	28
	34	17
26757-080002	19	17
	21	6
	33	9
26757-100002	14	18
		21
	15	5
	33	27
26757-120002	10	10
26757-140002	13	14
	22	20
	33	43
26817-160002	14	14
28110-100120	3	11
29610-000650	9	31
29610-000950	9	25
760590-01501	1	10
760590-21700	5	14
760590-23700	5	29
760590-55710	6	2
760598-01561	1	1
760598-22500	5	23
7N3501-36000	14	2
7N3501-36010	14	1
7N3503-25000	30	8
7N3503-35000	13	1
7N3561-51000	15	6
7N3563-36000	14	2 -1

Parts No.	Fig. No.	Ref. No.
7N3563-36010	14	1 -1

Parts No.	Fig. No.	Ref. No.
-----------	----------	----------

Parts No.	Fig. No.	Ref. No.
-----------	----------	----------